



CONSORZIO DI BONIFICA PIANURA DI FERRARA

Sede legale e recapito postale:

44121 Ferrara - Via Borgo dei Leoni, 28 - C.F. 93076450381

web: www.bonificaferrara.it - e-mail: info@bonificaferrara.it - pec: posta.certificata@pec.bonificaferrara.it

aderente all'  Associazione Nazionale Bonifiche, Irrigazioni e Miglioramenti Fondiari

SISTEMA IRRIGUO VALLE PEGA

PROGETTO DEFINITIVO ED ESECUTIVO

Provincia di Ferrara

Comuni di Comacchio e Ostellato

**Recupero, adeguamento e miglioramento
funzionale del sistema irriguo di Valle Pega**

RELAZIONI TECNICHE E SPECIALISTICHE INQUADRAMENTO GENERALE - AUTORIZZAZIONI

Elaborato:

**INDAGINI GEOLOGICHE, IDROGEOLOGICHE
E DI CARATTERIZZAZIONE SISMICA**

Calcolo indice di liquefazione e cedimenti post sismici

Codifica:

1.4.8

**Progetto generale e
integrazione delle prestazioni
specialistiche:**

Dott. Ing. Marco Volpin



Progetto rete di distribuzione:

COGEST
engineering

Dott. Ing. Emiliano Corsi

**Progetto opere
elettromeccaniche:**

ELTEC S.r.l.
Società di ingegneria

Per. Ind. Deris Ortali

Progetto impianti elettrici:

A A ENGINEERING
DI ANGELINI ANDREA

Per. Ind. Andrea Angelini

Data:

28.06.2021

**Il Responsabile
del Procedimento**

Geom. Marco Ardizzoni

Indagini geologiche:



Dott. Geol. Antonio Mucchi

Coordinamento sicurezza:



Dott. Ing. Livia Burini

Collaboratori:

Dott. Ing. Laura Montanari

Per. Ind. Lorenzo Fantini

Rev.	Descrizione	Redatto	Verificato	Approvato	Data
A	Emissione	Mucchi A.	Mucchi A.	Mucchi A.	Aprile 2021
B					
C					

LABORATORIO GOTECNICO Dr. ANTONIO MUCCHI

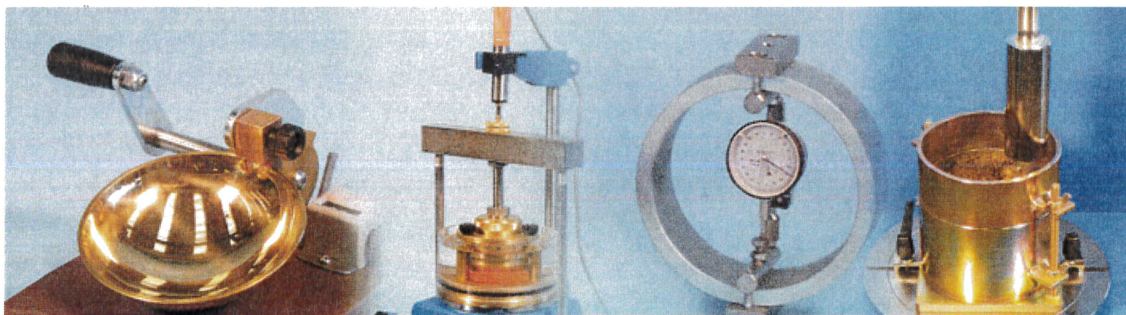
mucchilab@tin.it - www.mucchilab.it

Autorizzazione del Ministero Infrastrutture e Trasporti

Per prove di laboratorio sui terreni – ai sensi dell'art. 59 del DPR 380/01

Via Alberto Ascari, 8 – 44019 Gualdo di Voghiera (FE)

Tel. 0532/ 815681



LABORATORIO PROVE MATERIALI

Aut. Min. ai sensi dell'art. 59 del D.P.R. n° 380/01

Terre - Inerti - Riciclati - Asfalti

www.mucchilab.it - Tel. 0532.815681 Gualdo (FE)

COMMITTENTE : CONSORZIO DI BONIFICA PIANURA DI FERRARA

CANTIERE : Valle Pega – Comacchio (FE)

**PROGETTO : Recupero, adeguamento e miglioramento funzionale
del sistema irriguo di Valle Pega**

ALLEGATO G – CALCOLO IL E CEDIMENTI POST SISMICI

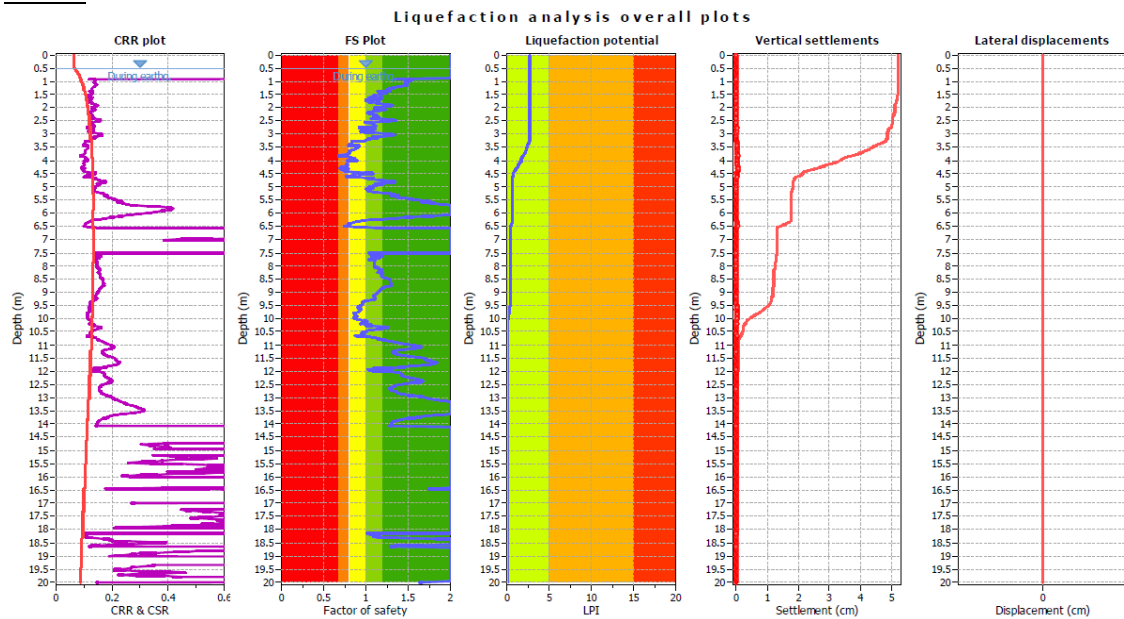
Dott. Geol. Antonio Mucchi	Dott. Ing. Valentina Mucchi
	Ferrara, 21/07/2020 Prot 935 / 2020

METODO DI ROBERTSON (NCEER R&W 1998,2009)

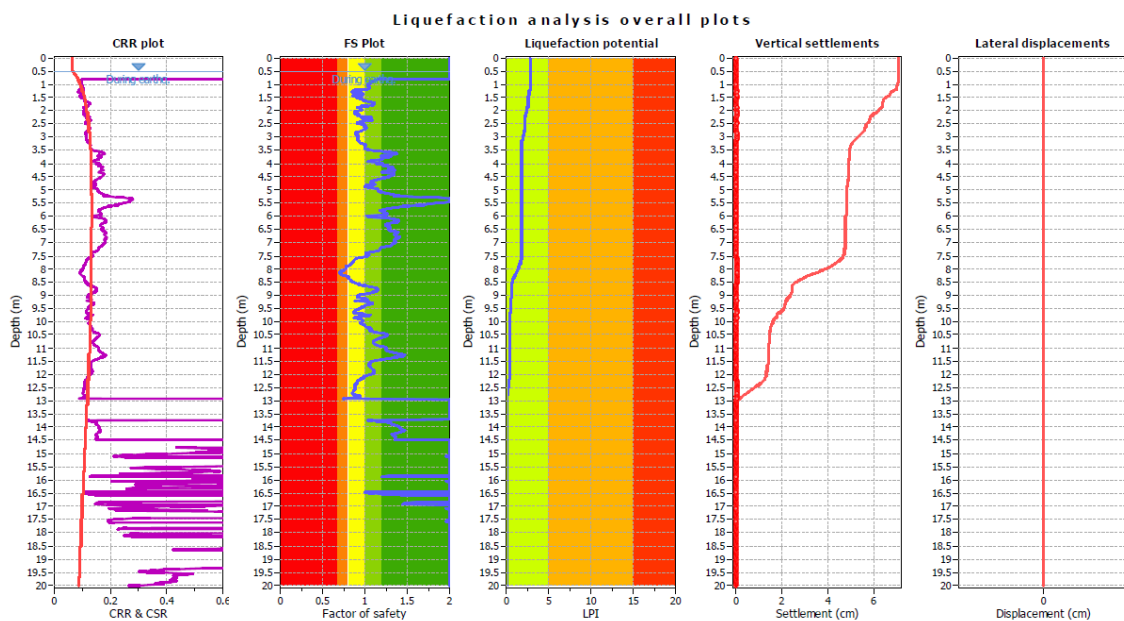
Mw=6,14

PGA= 0.17g

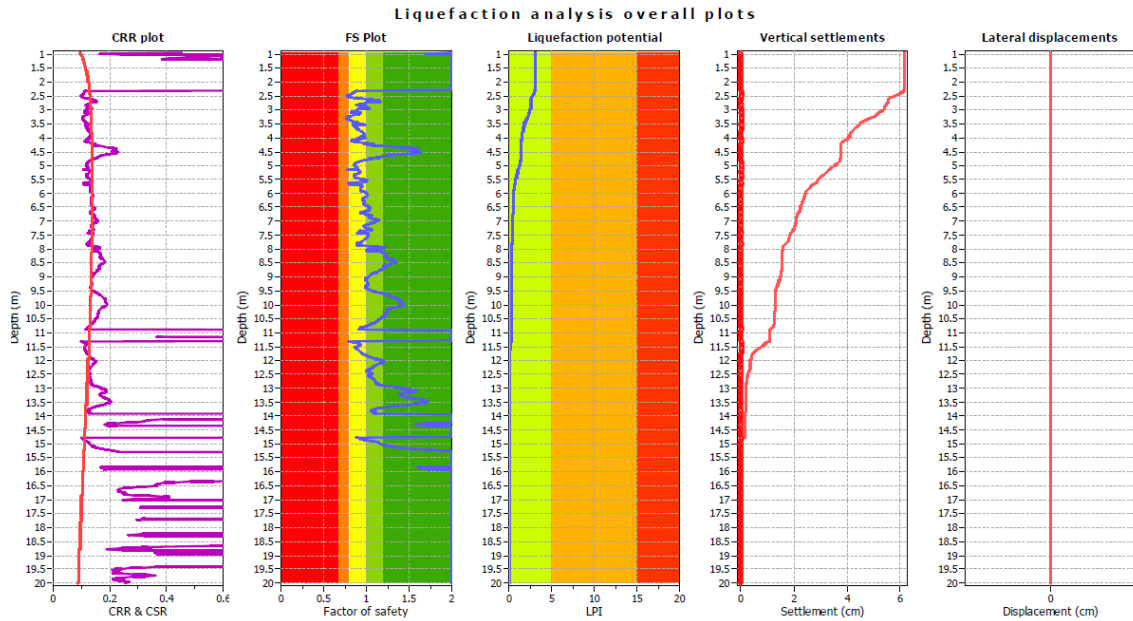
CPTU1



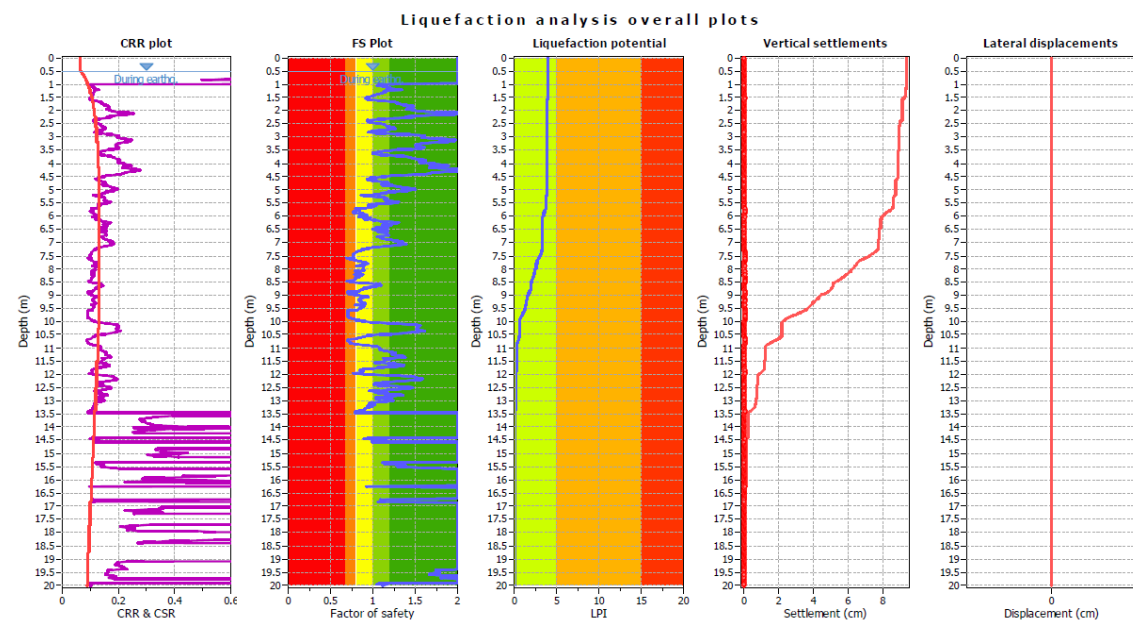
CPTU2



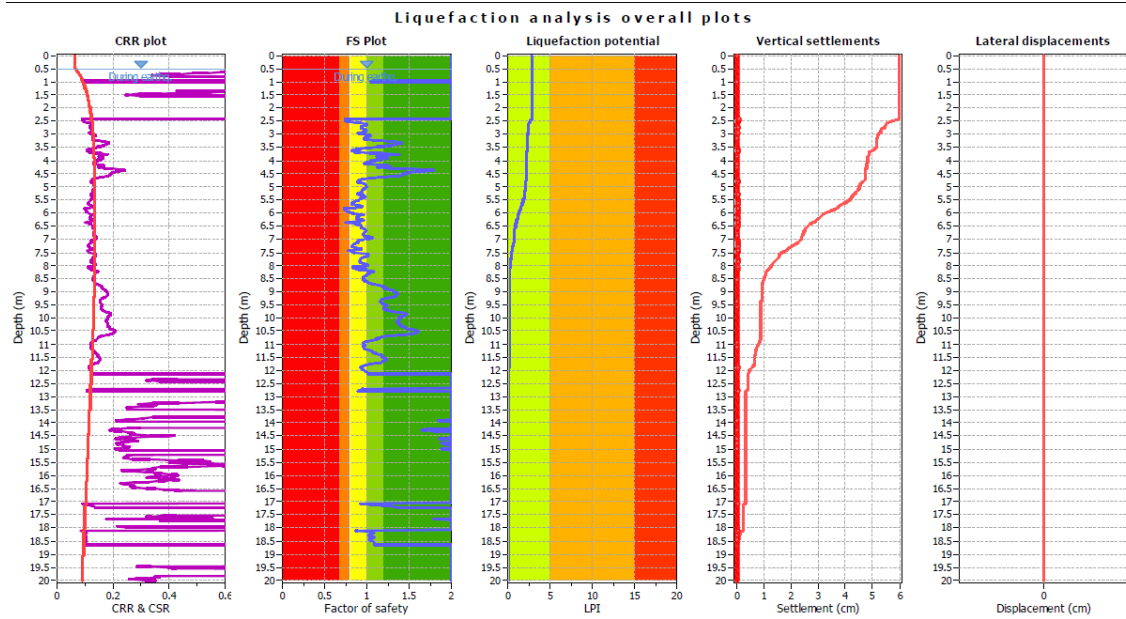
CPTU3



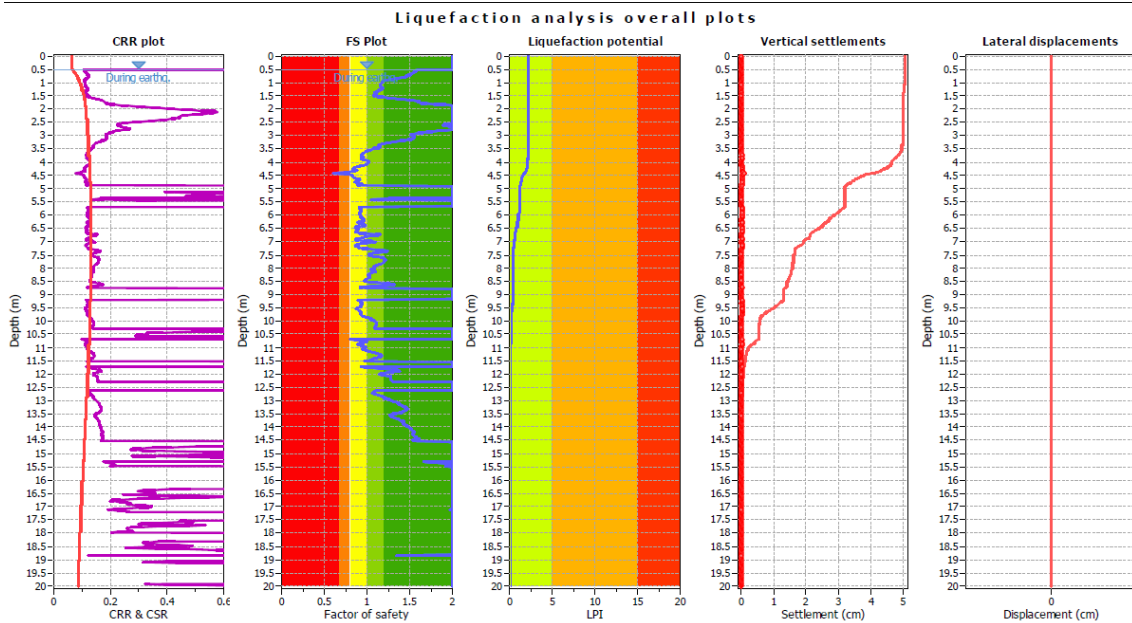
CPTU4



CPTU5

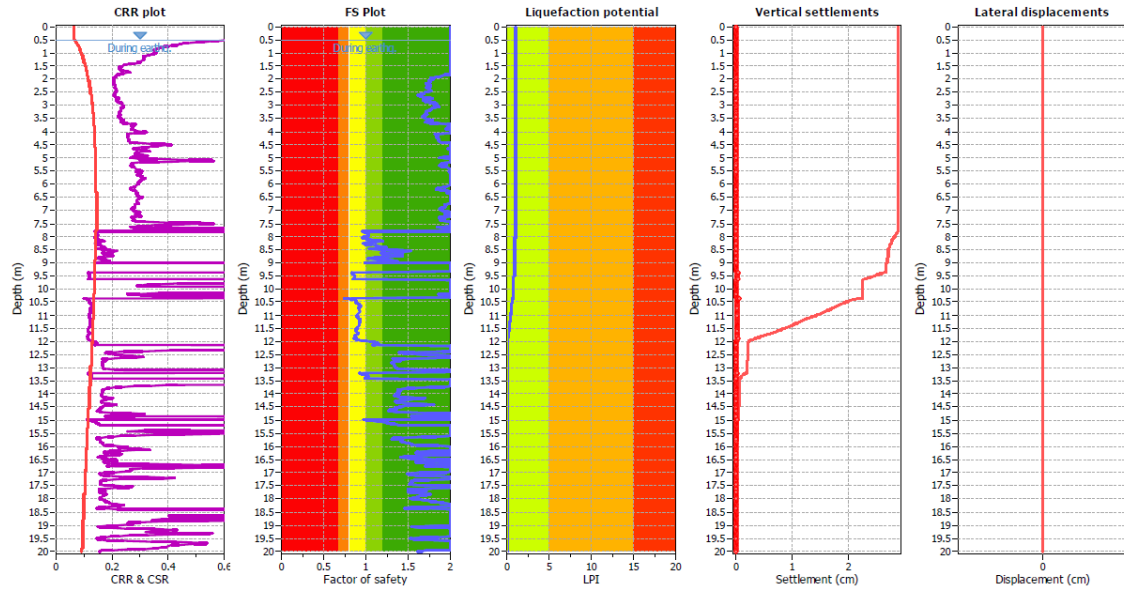


CPTU6



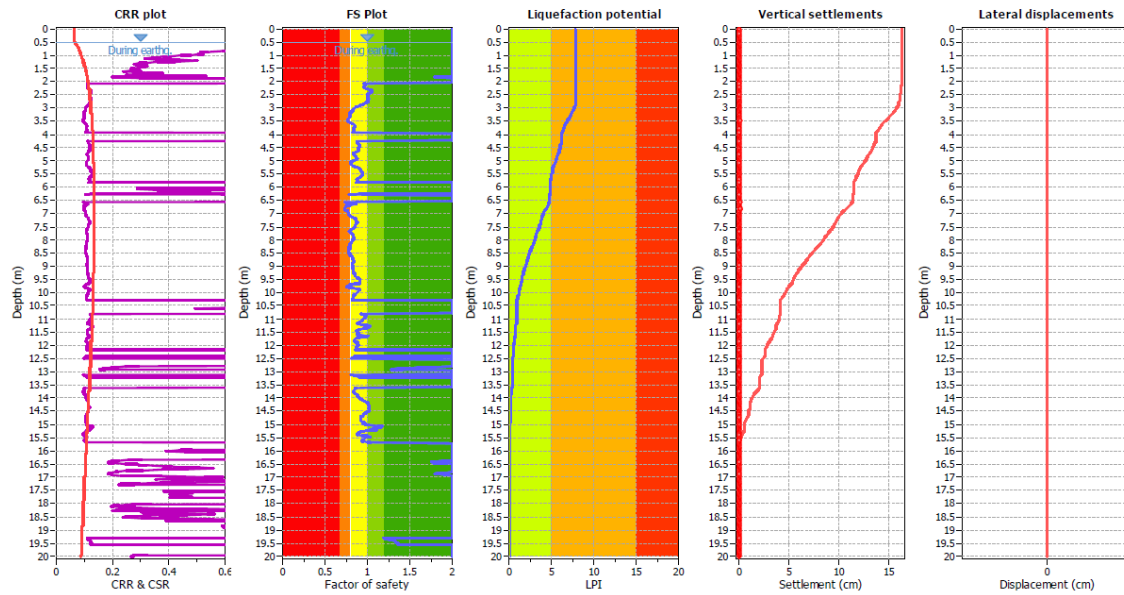
CPTU7

Liquefaction analysis overall plots



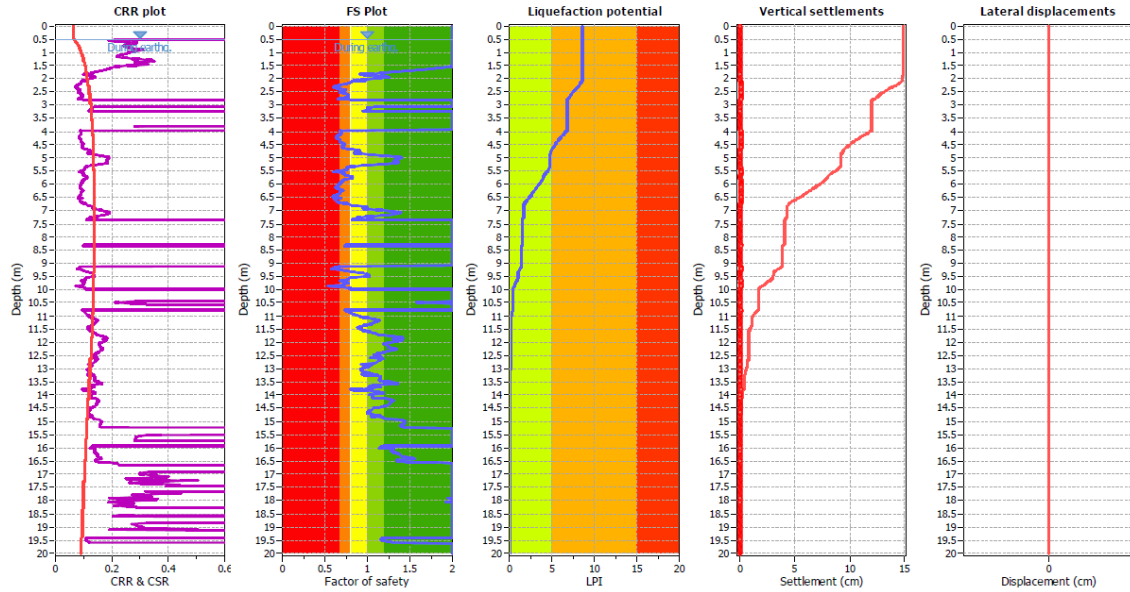
CPTU8

Liquefaction analysis overall plots



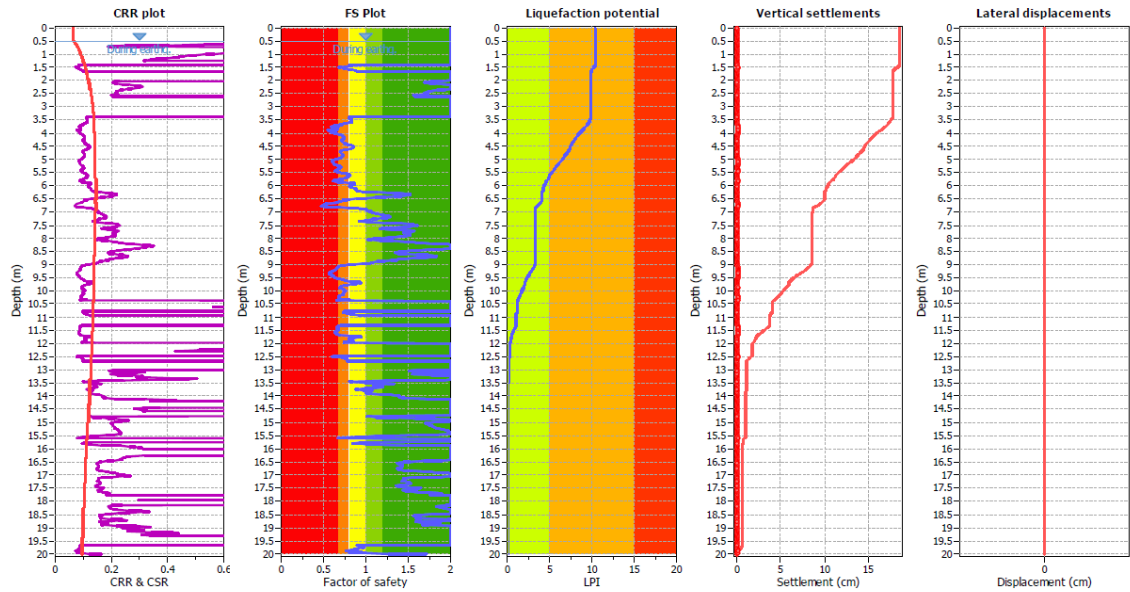
CPTU9

Liquefaction analysis overall plots



CPTU10

Liquefaction analysis overall plots

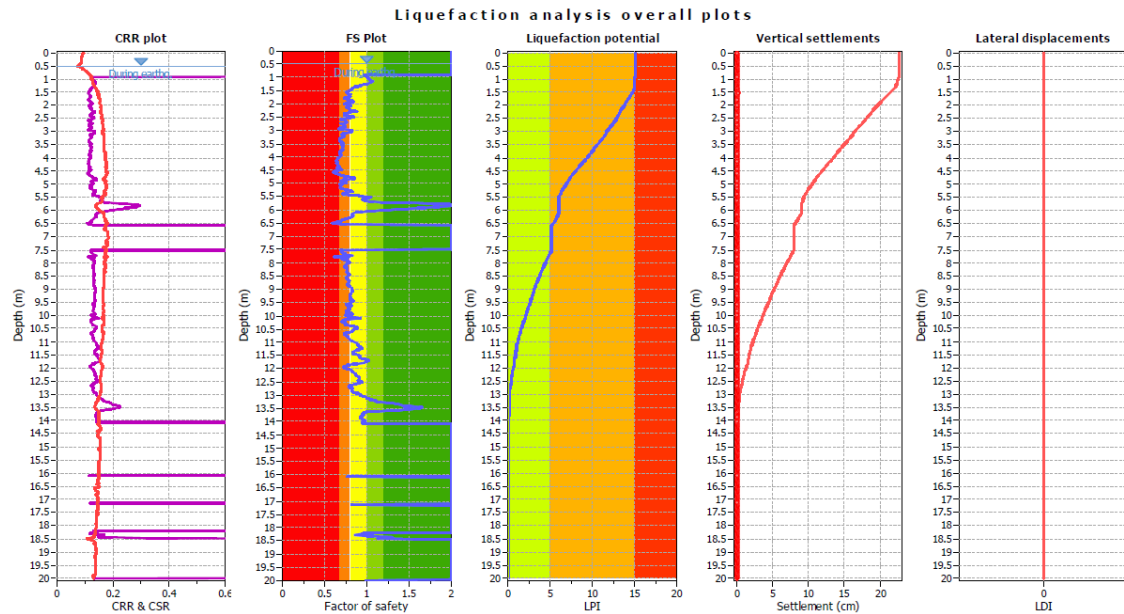


METODO DI BOULANGER & IDRISS (2014)

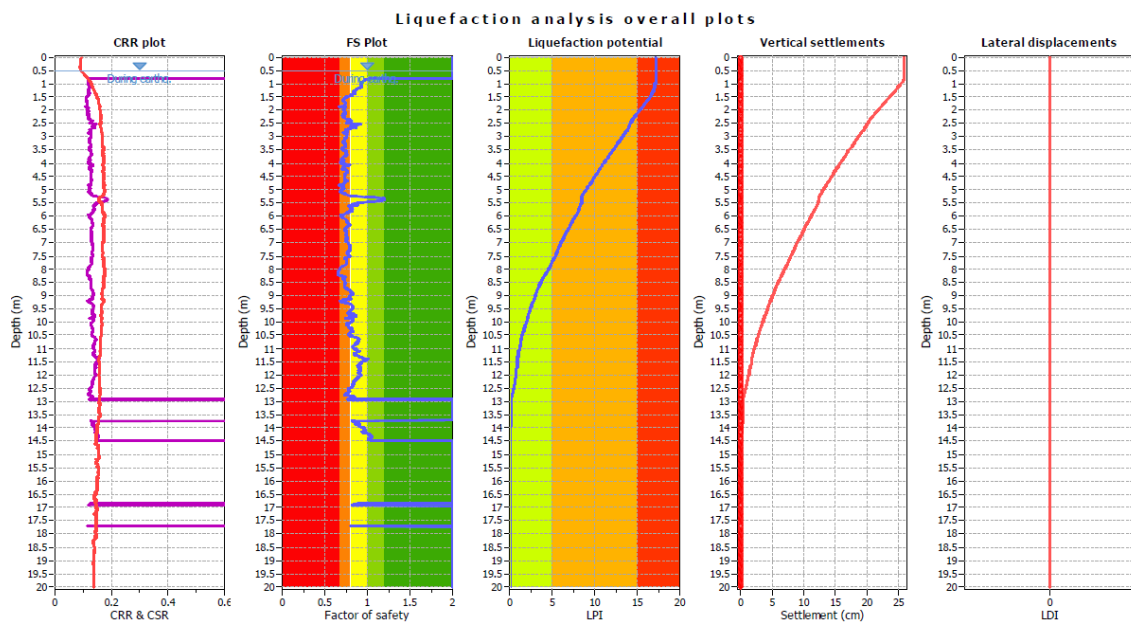
$M_w=6,14$

$PGA= 0.17g$

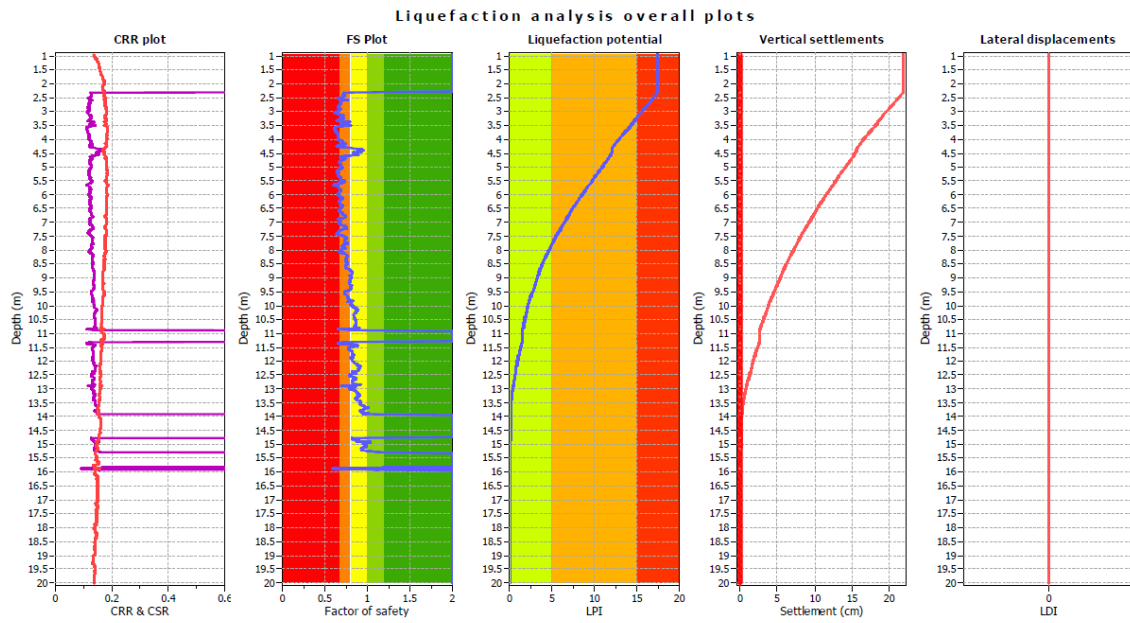
CPTU1



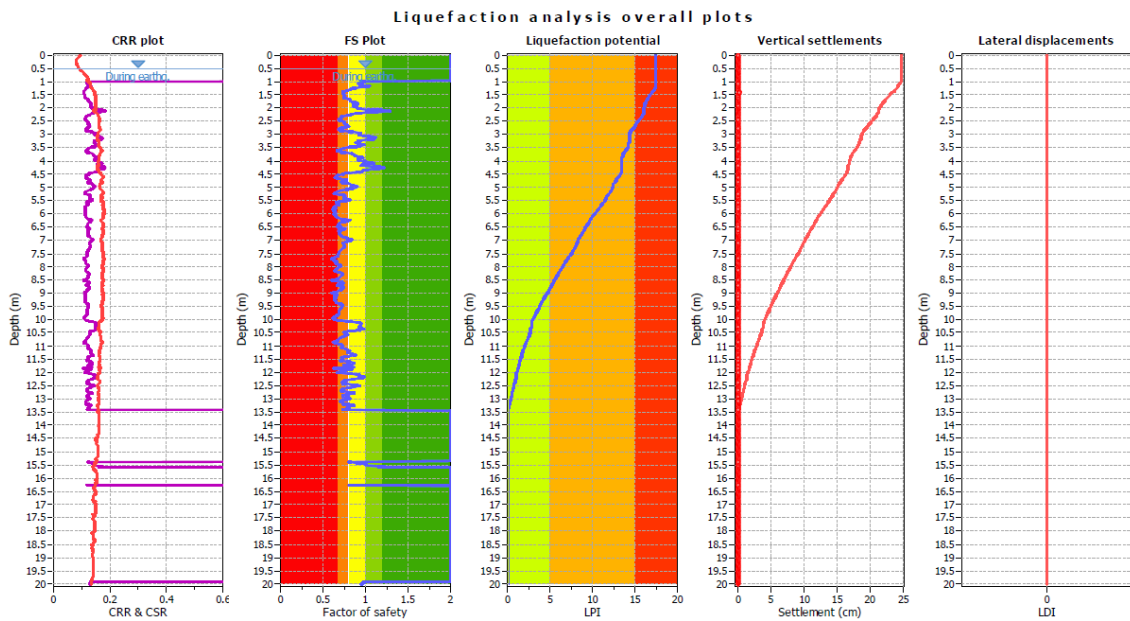
CPTU2



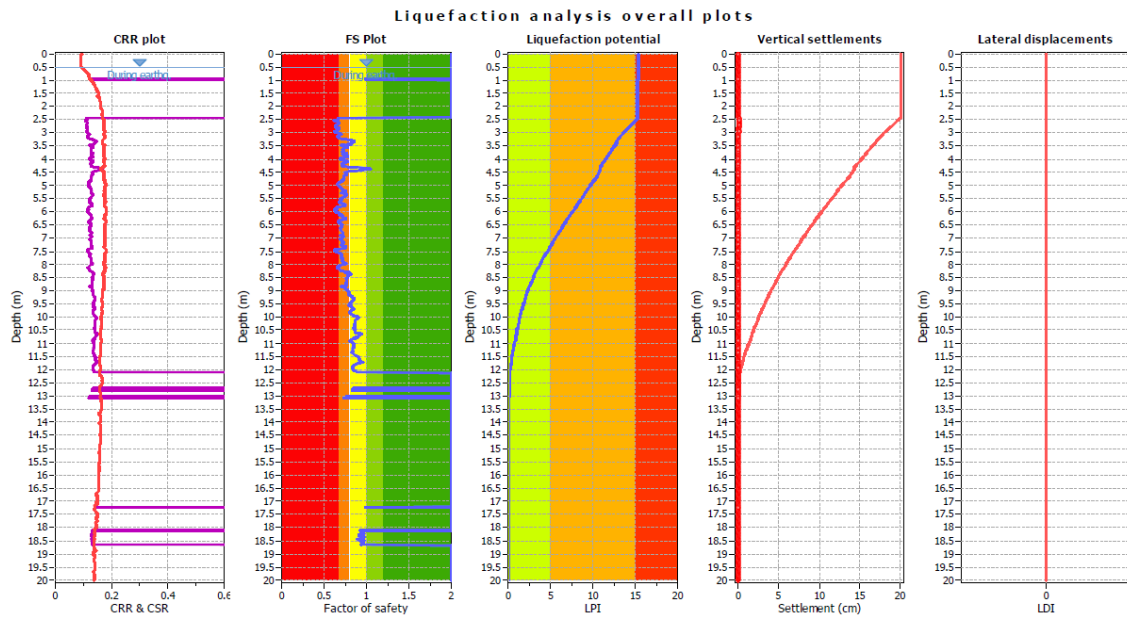
CPTU3



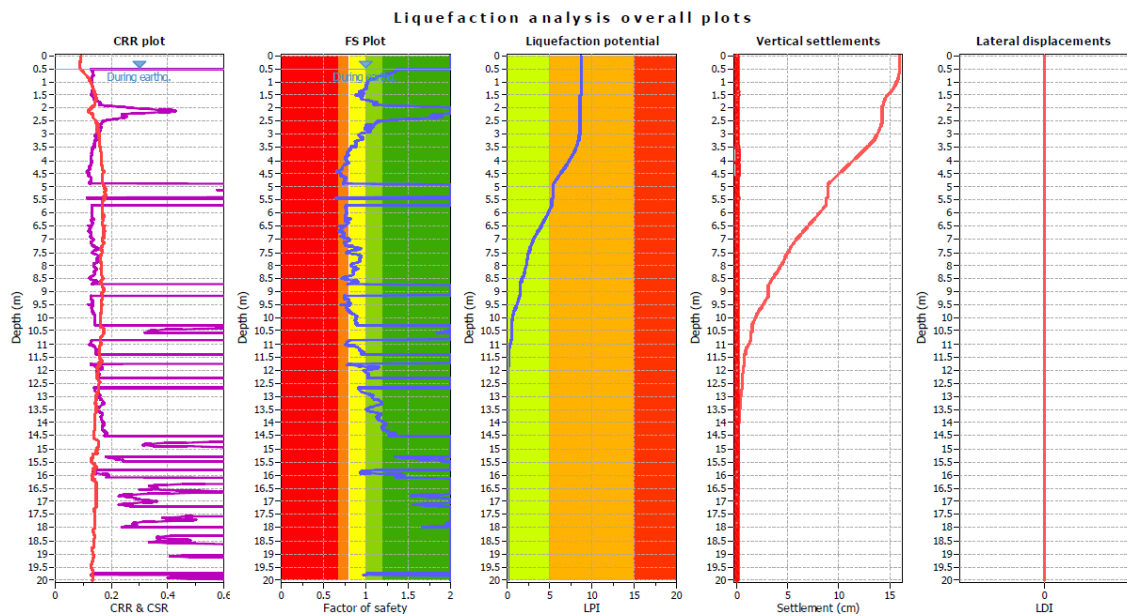
CPTU4



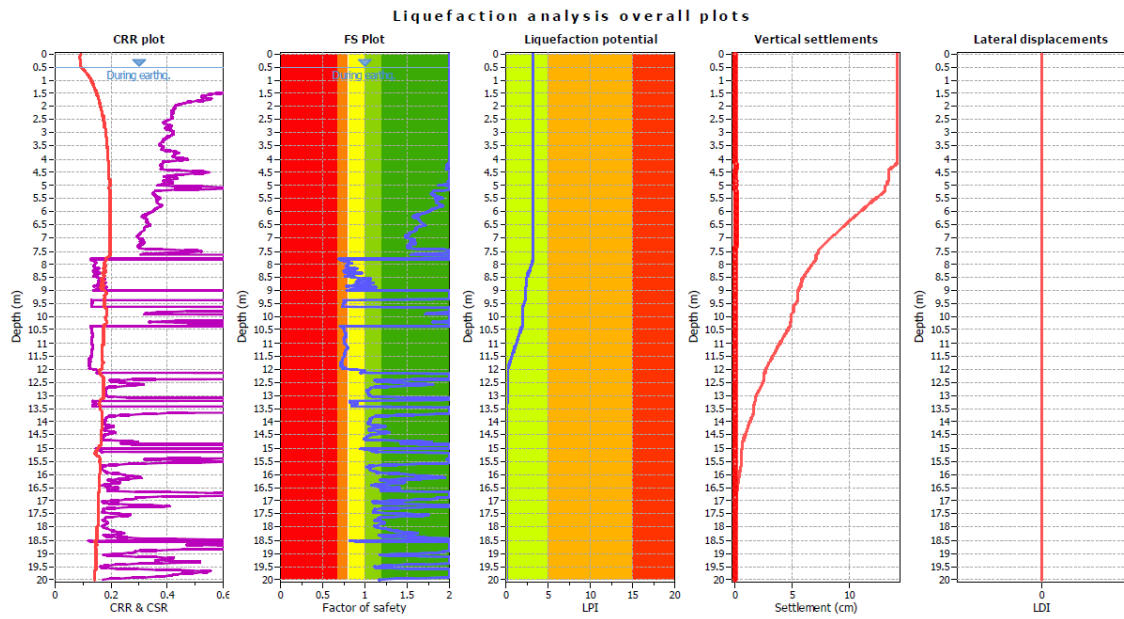
CPTU5



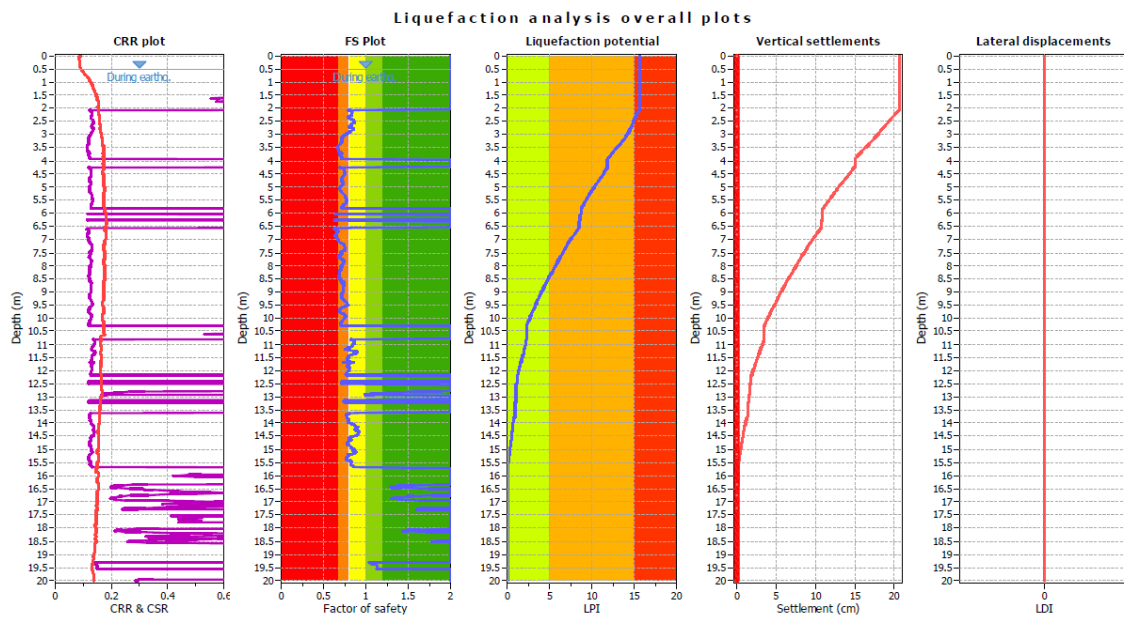
CPTU6



CPTU7

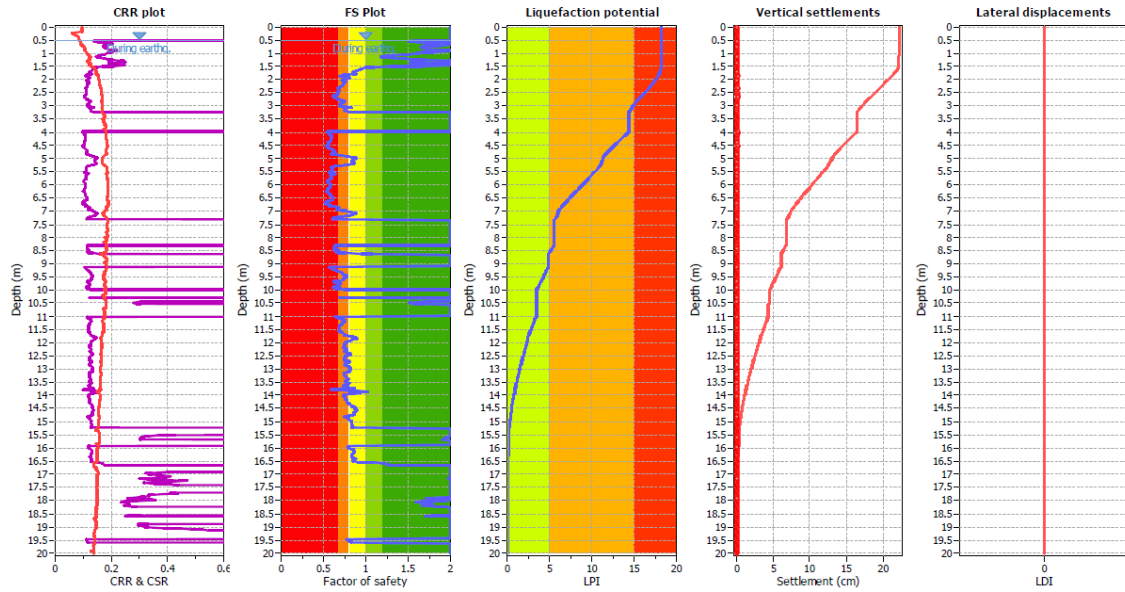


CPTU8



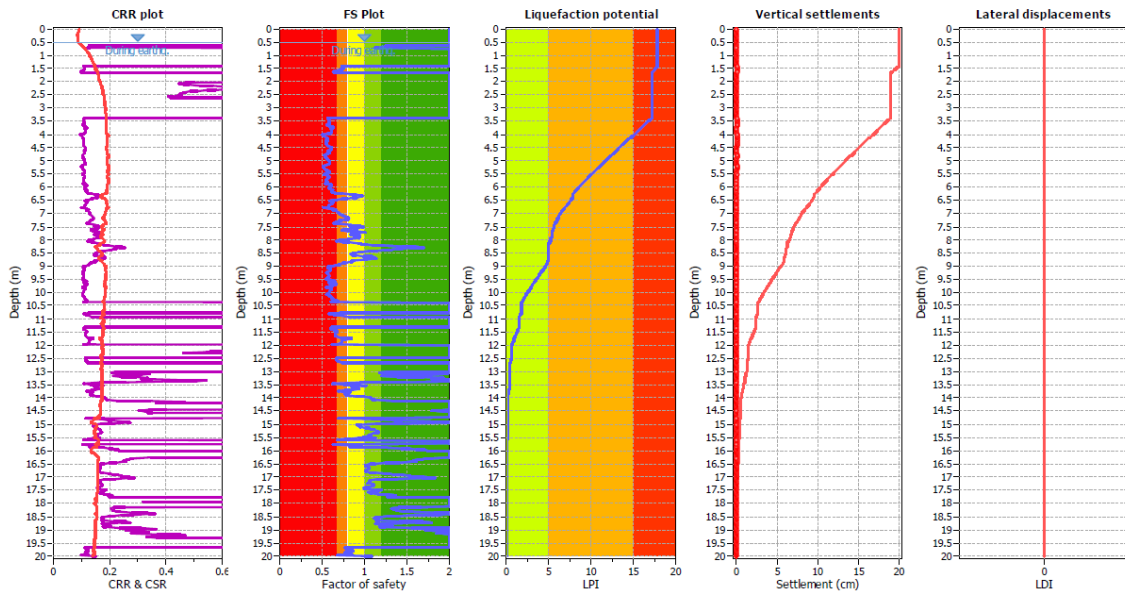
CPTU9

Liquefaction analysis overall plots



CPTU10

Liquefaction analysis overall plots

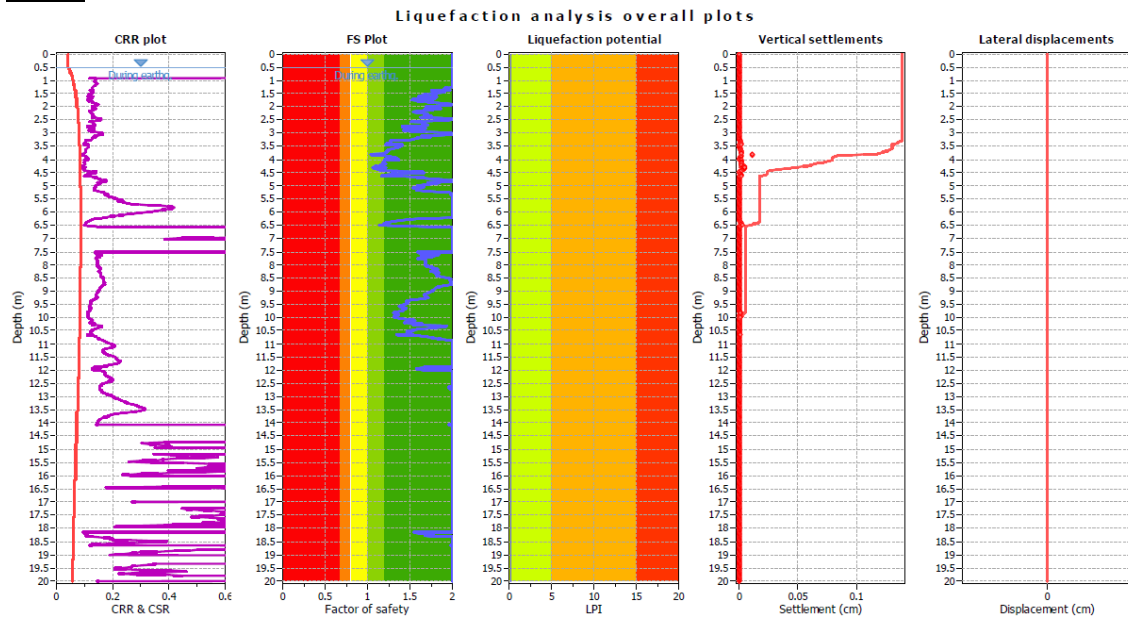


METODO DI ROBERTSON (NCEER R&W 1998,2009)

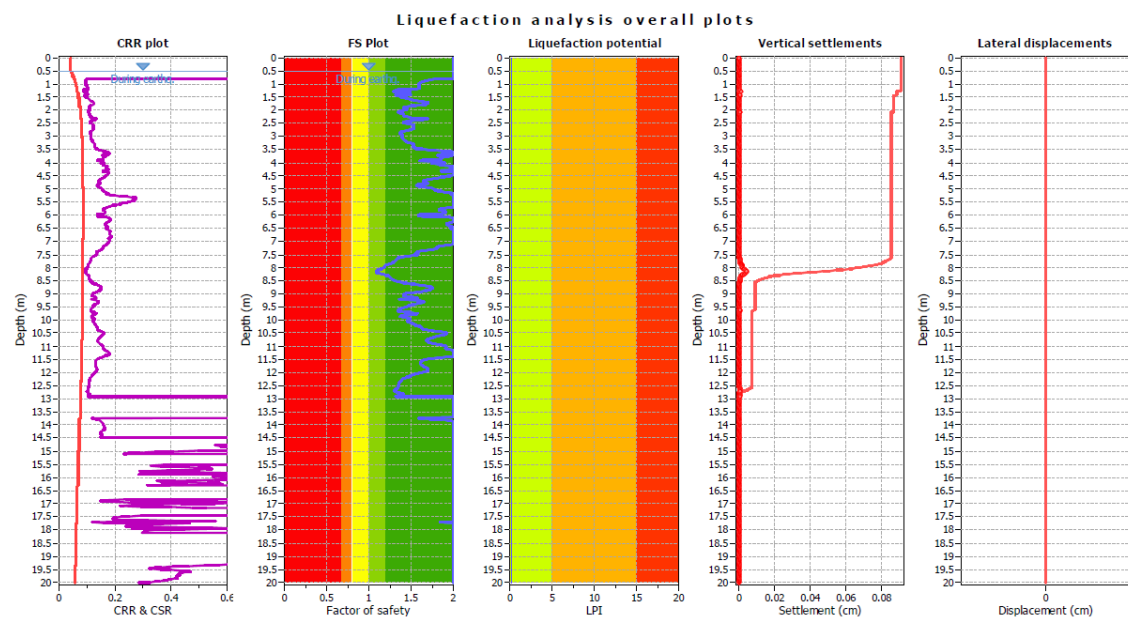
Mw=5,20

PGA= 0.17g

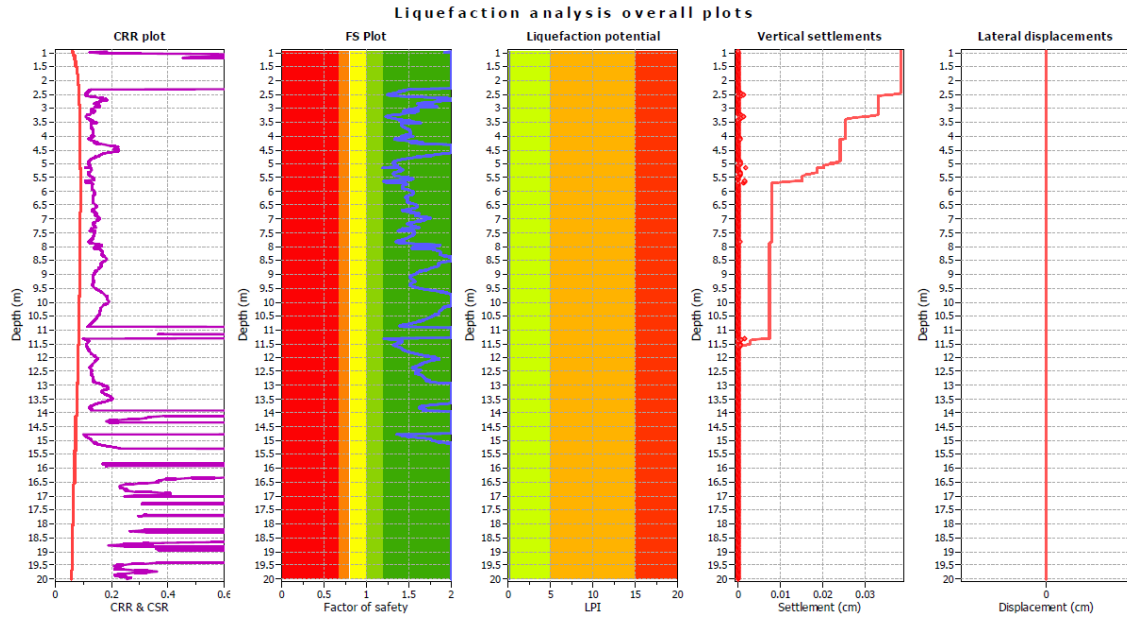
CPTU1



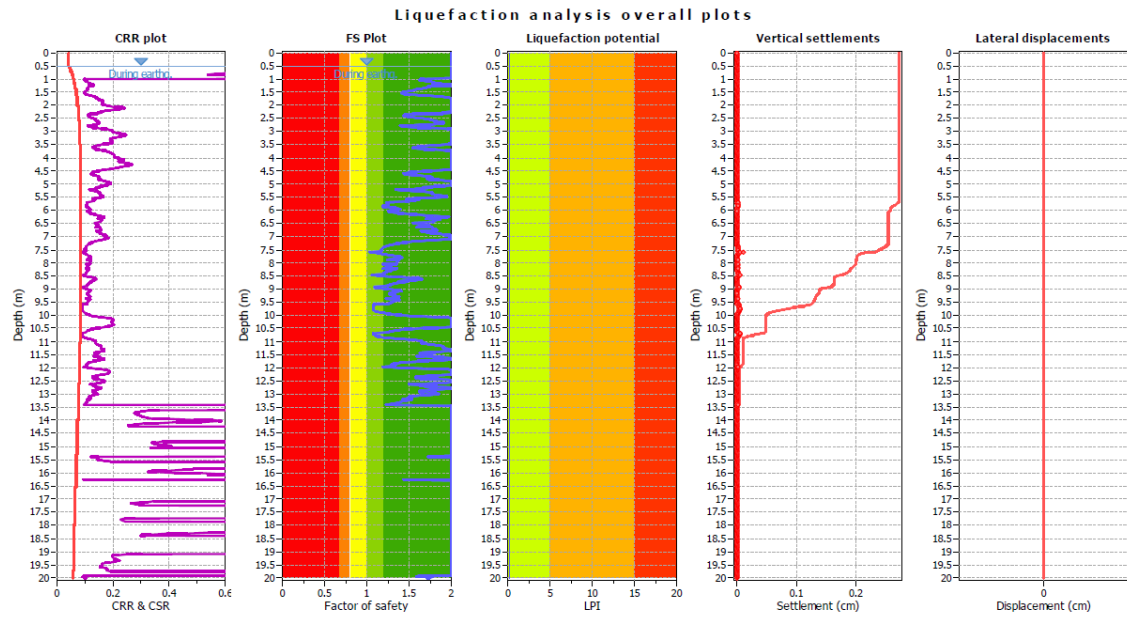
CPTU2



CPTU3

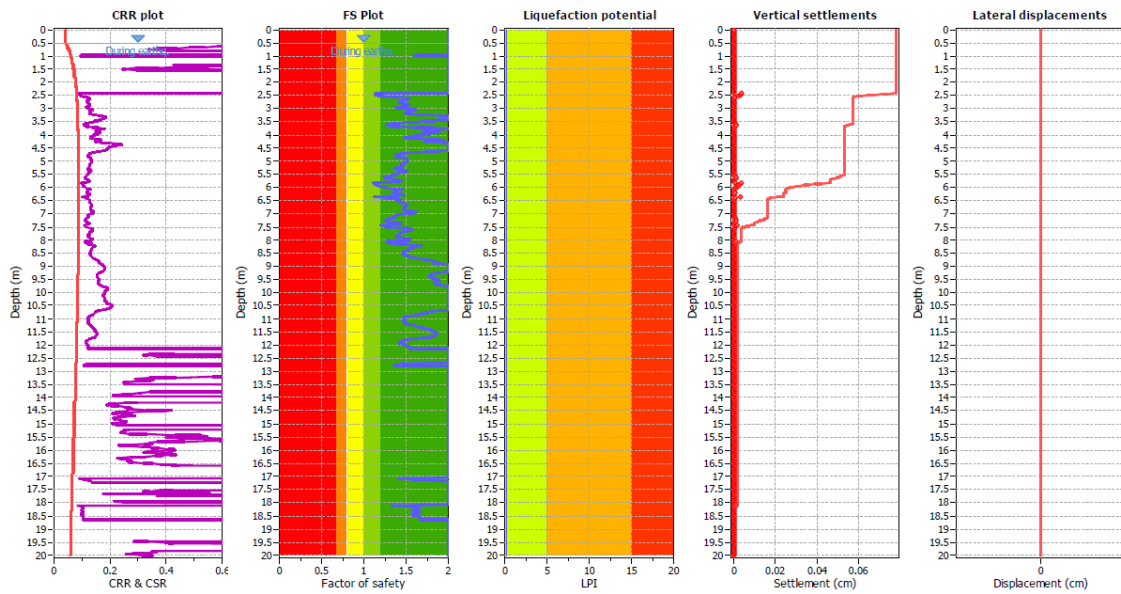


CPTU4



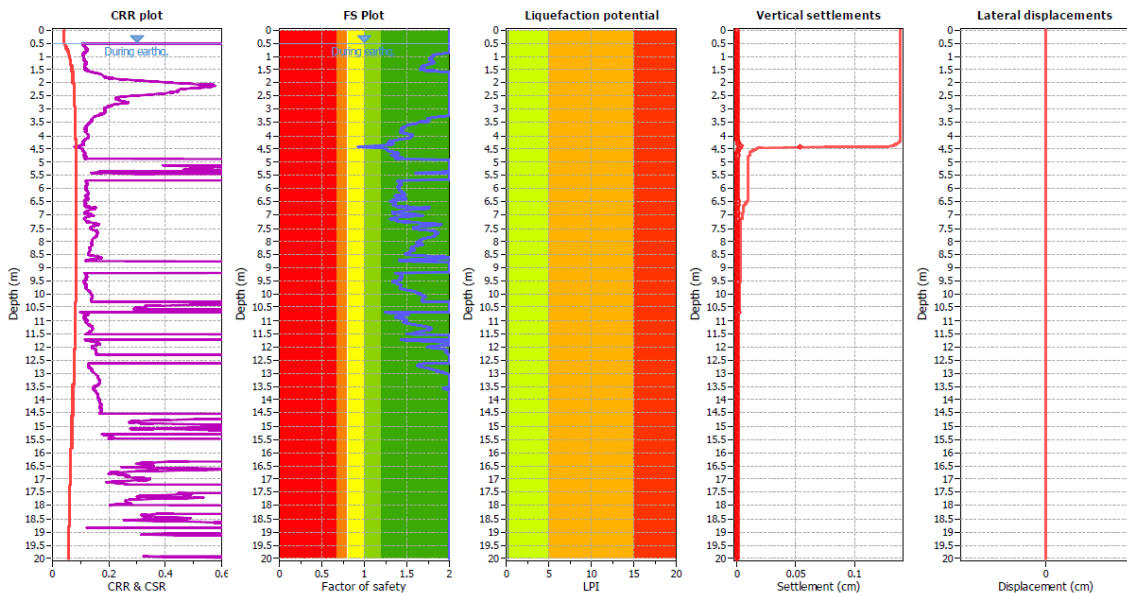
CPTU5

Liquefaction analysis overall plots



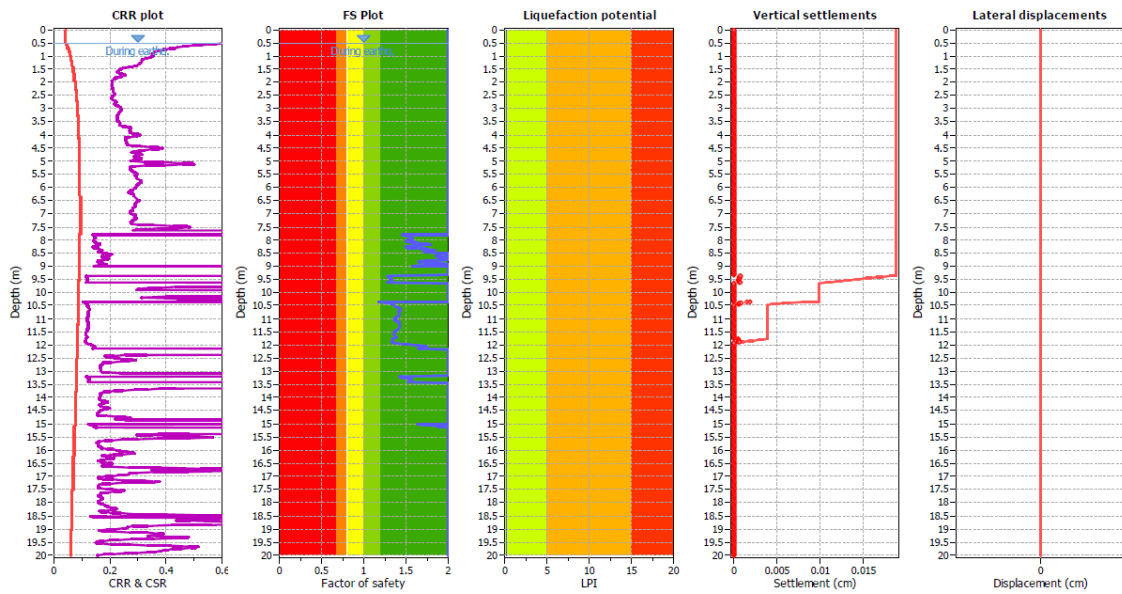
CPTU6

Liquefaction analysis overall plots



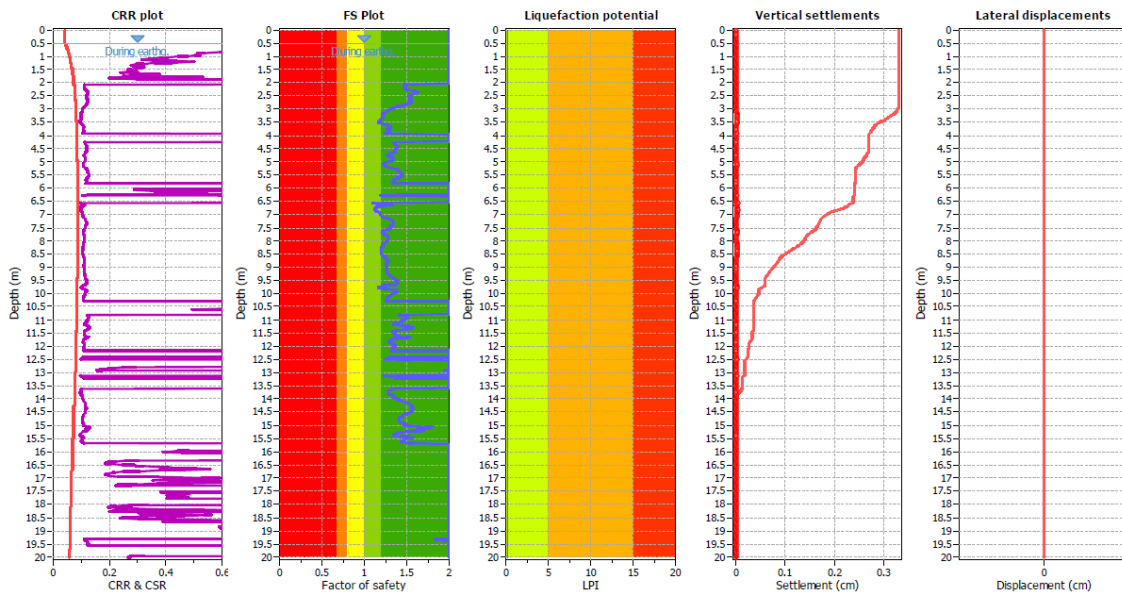
CPTU7

Liquefaction analysis overall plots

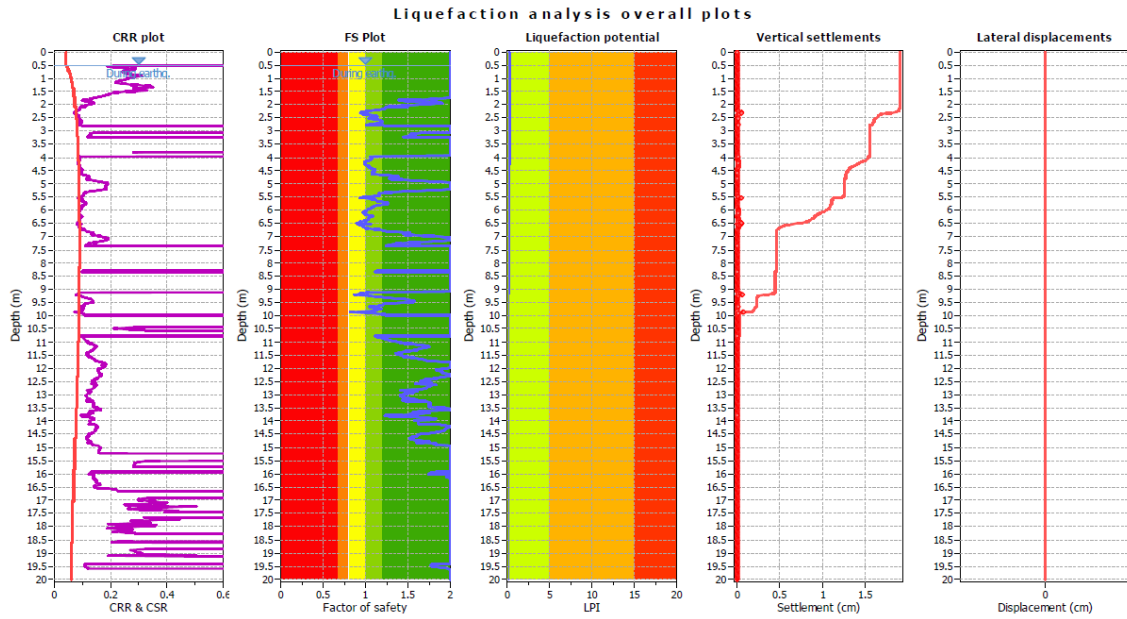


CPTU8

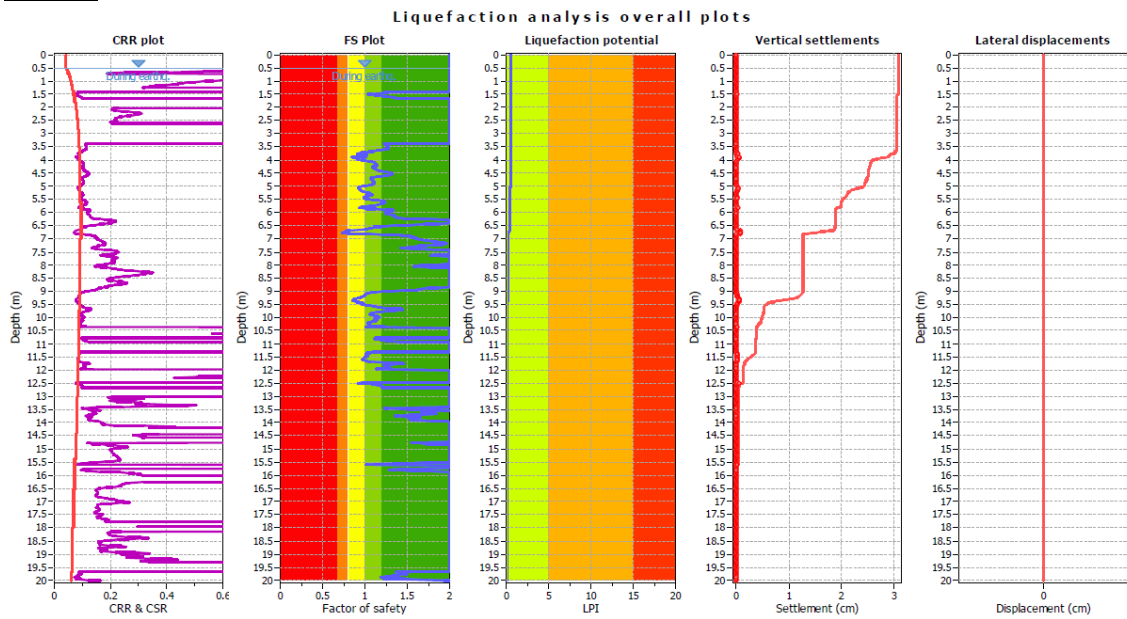
Liquefaction analysis overall plots



CPTU9



CPTU10

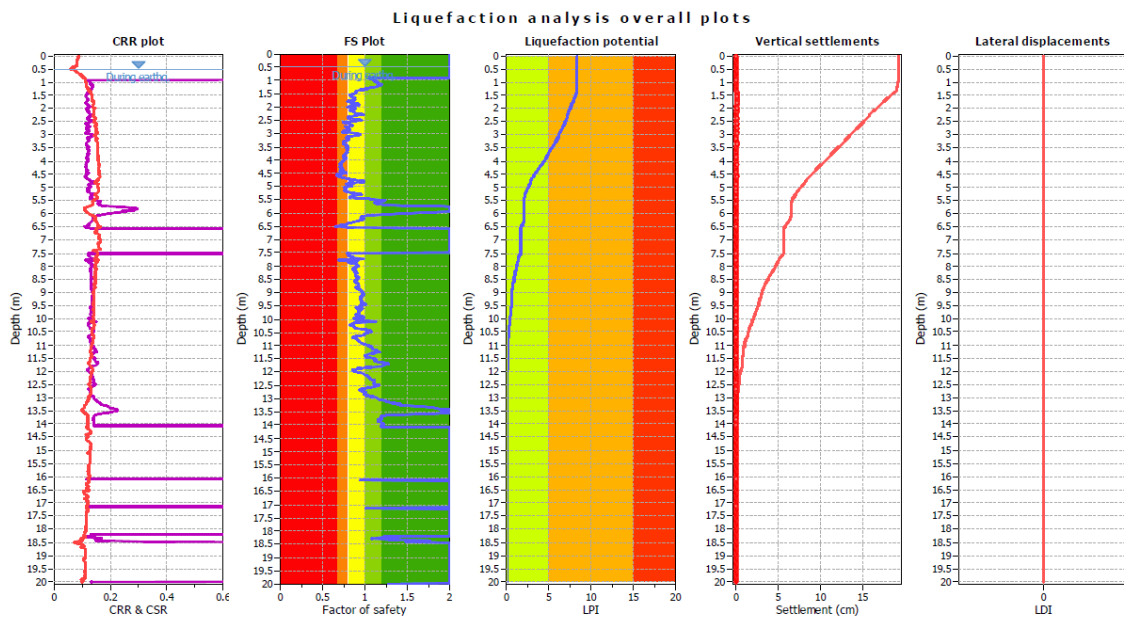


METODO DI BOULANGER & IDRIS (2014)

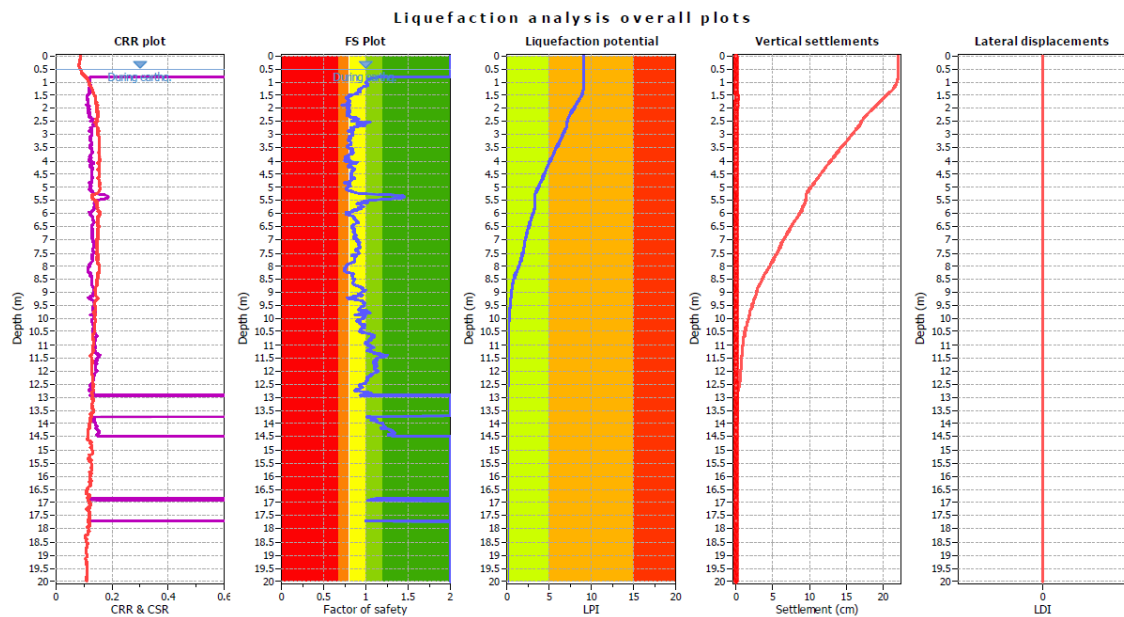
Mw=5,20

PGA= 0.17g

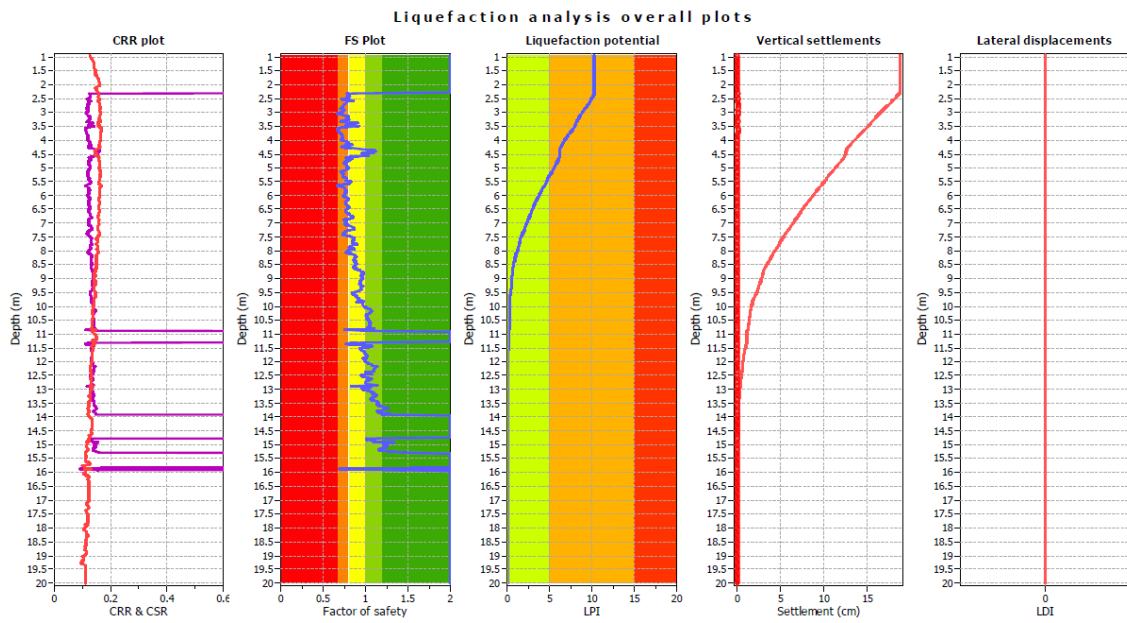
CPTU1



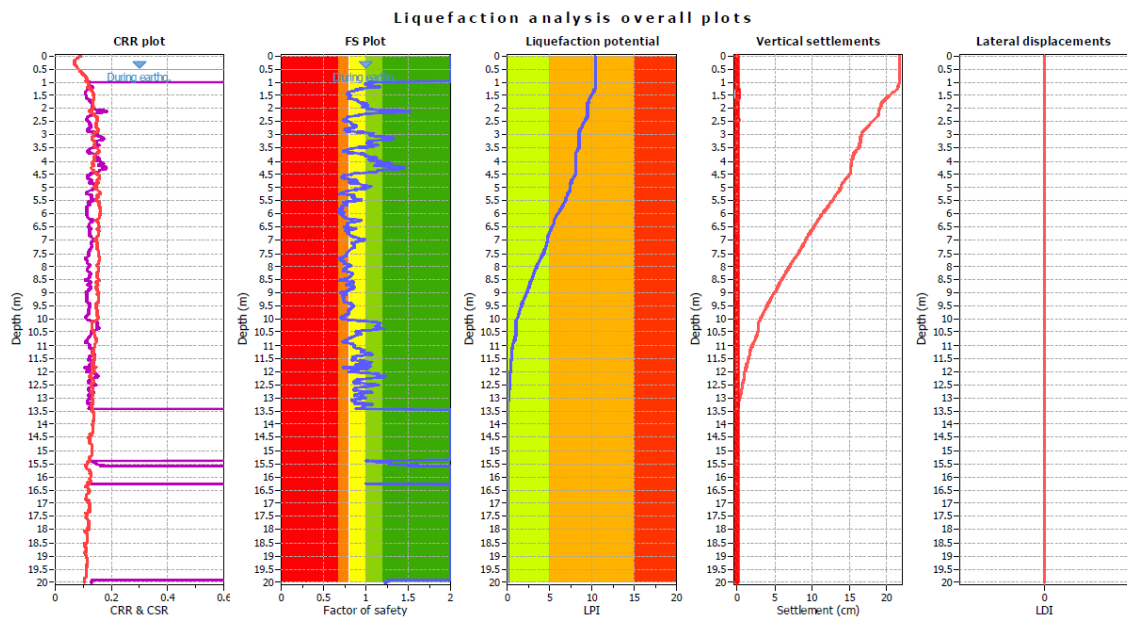
CPTU2



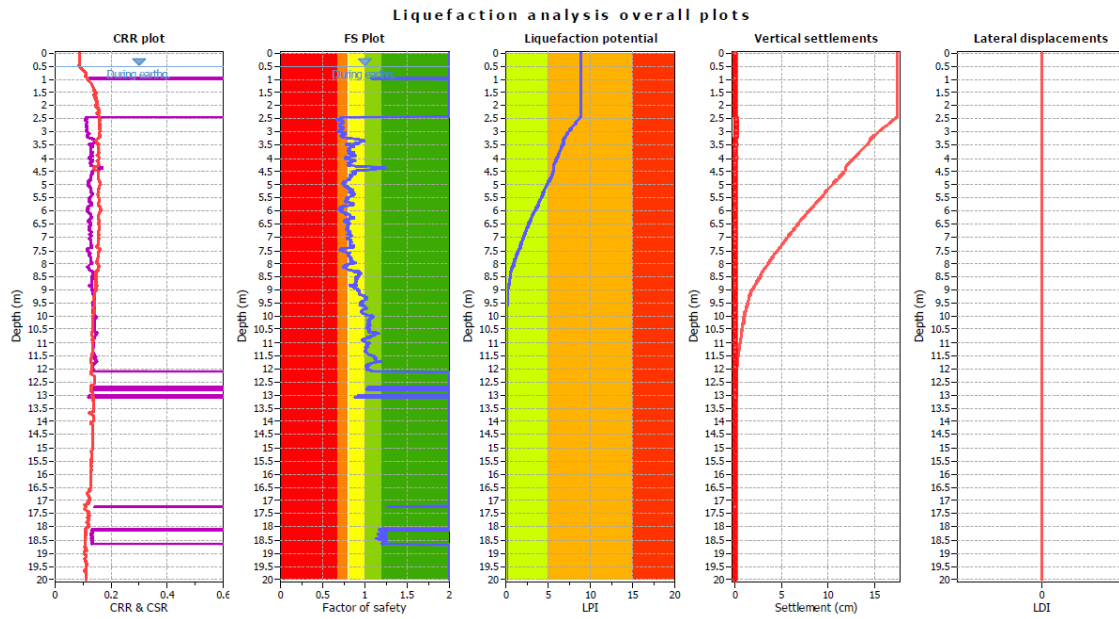
CPTU3



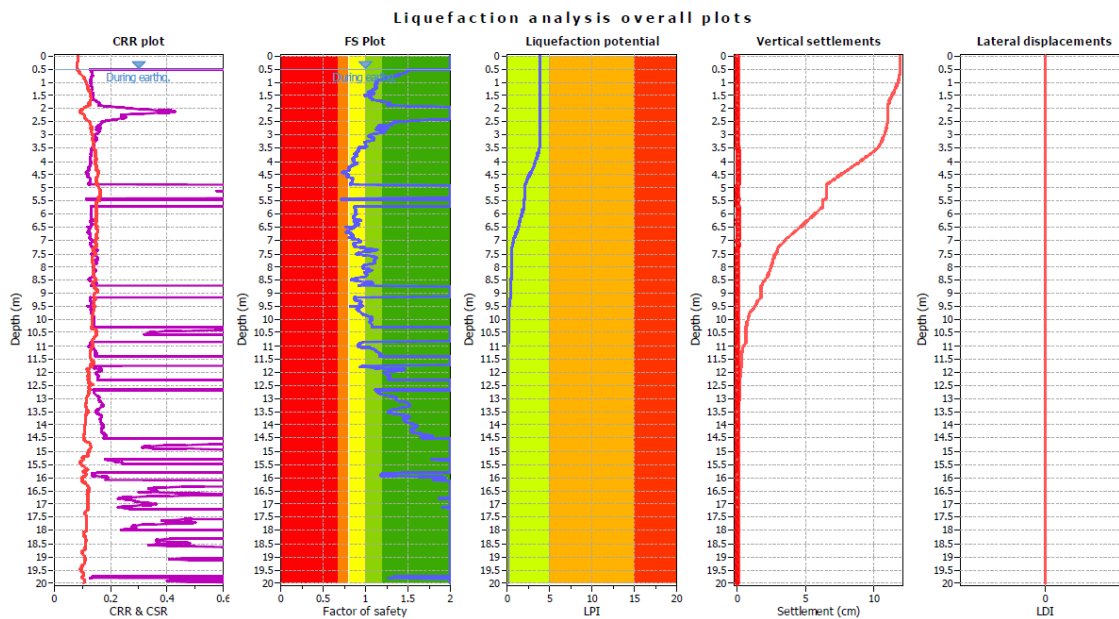
CPTU4



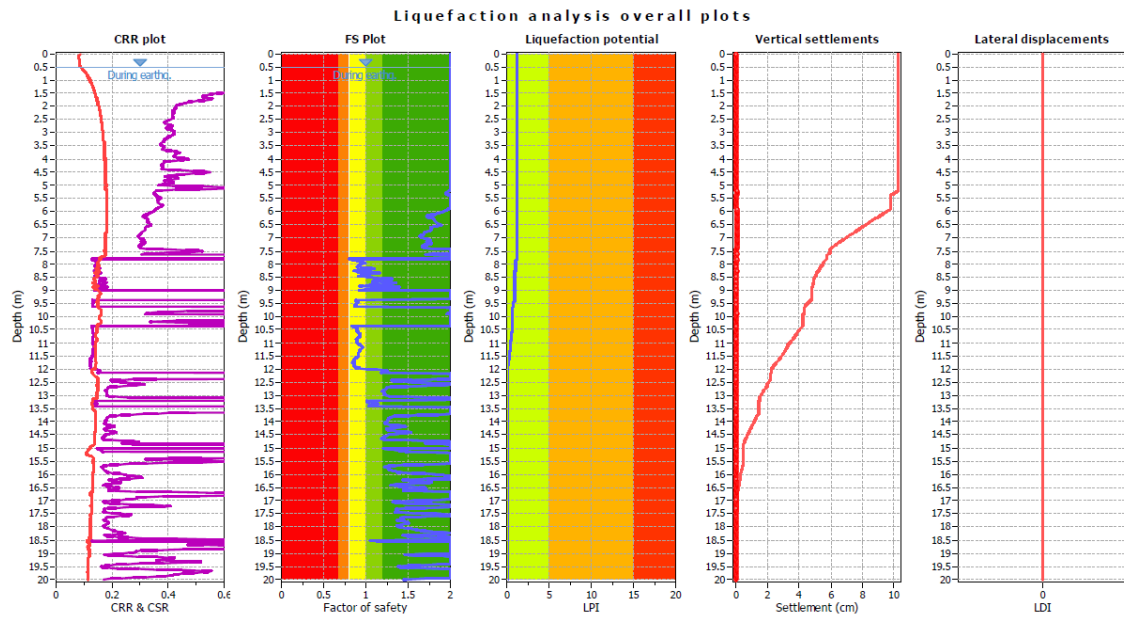
CPTU5



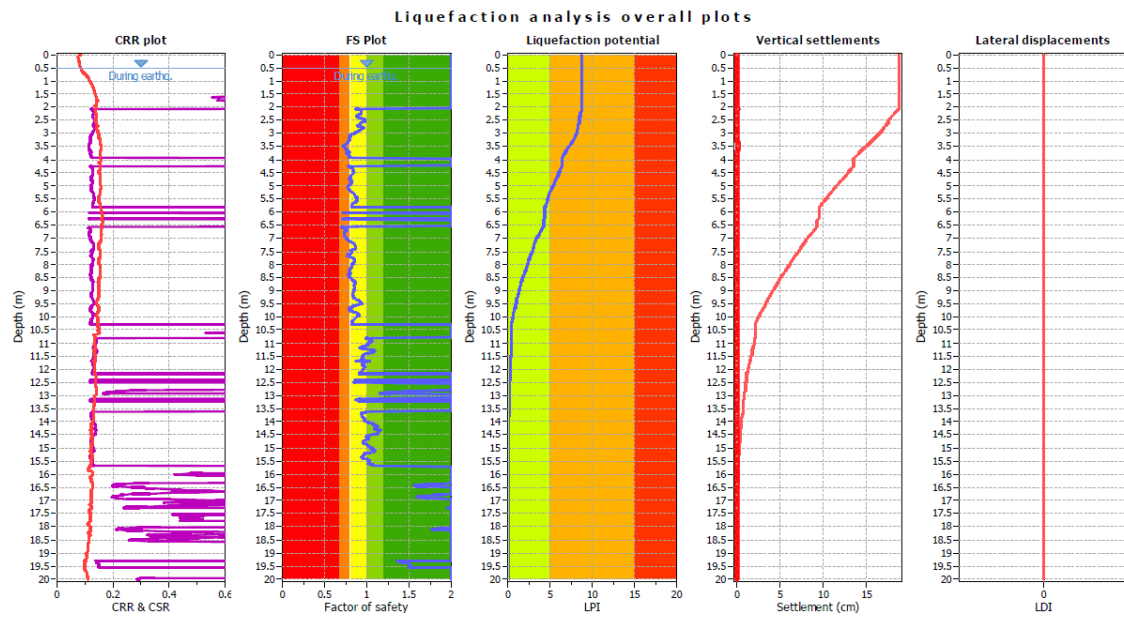
CPTU6



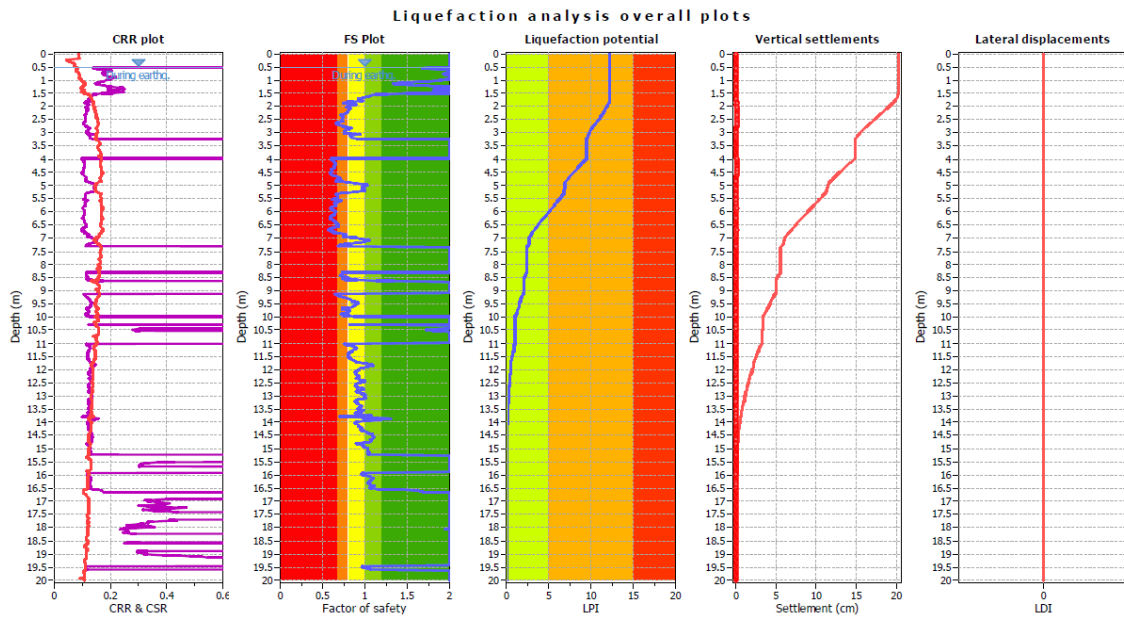
CPTU7



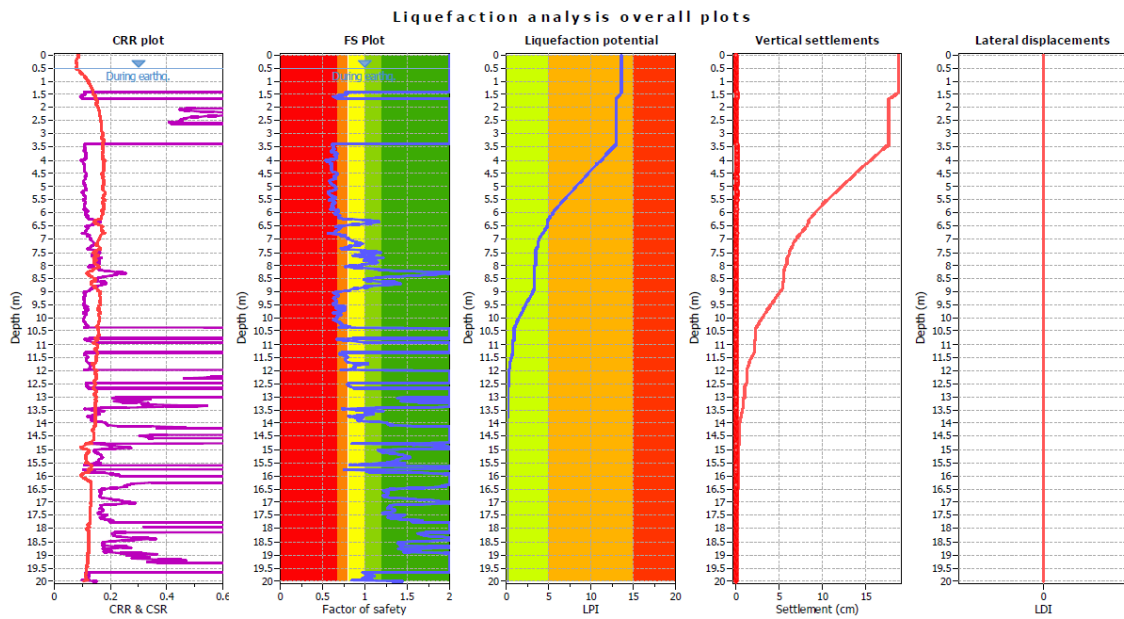
CPTU8



CPTU9



CPTU10

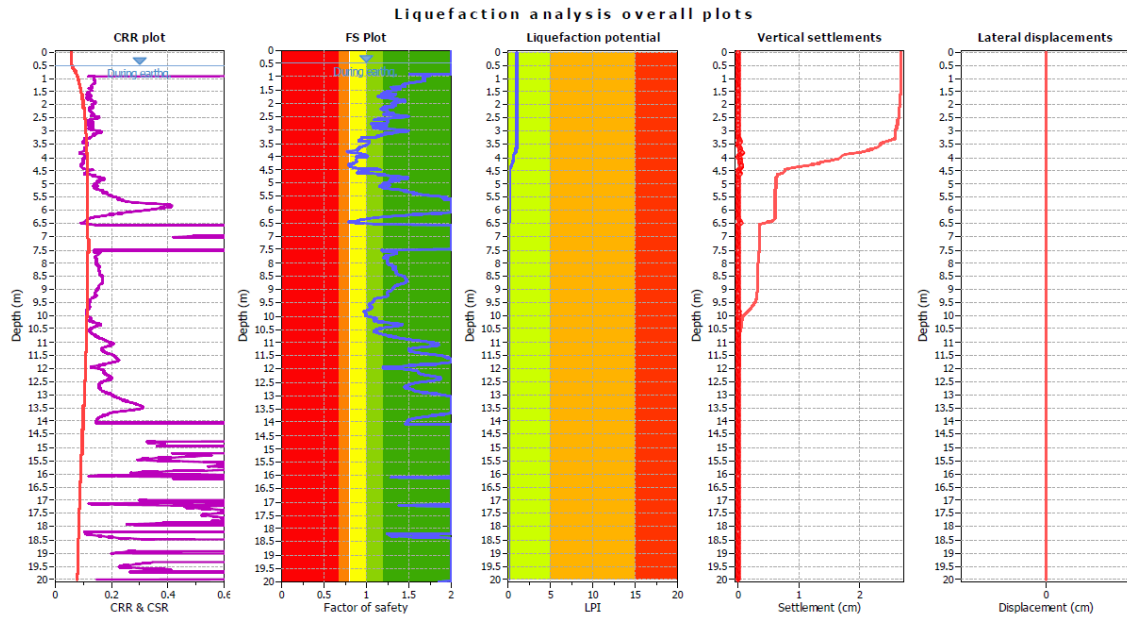


METODO DI ROBERTSON (NCEER R&W 1998,2009)

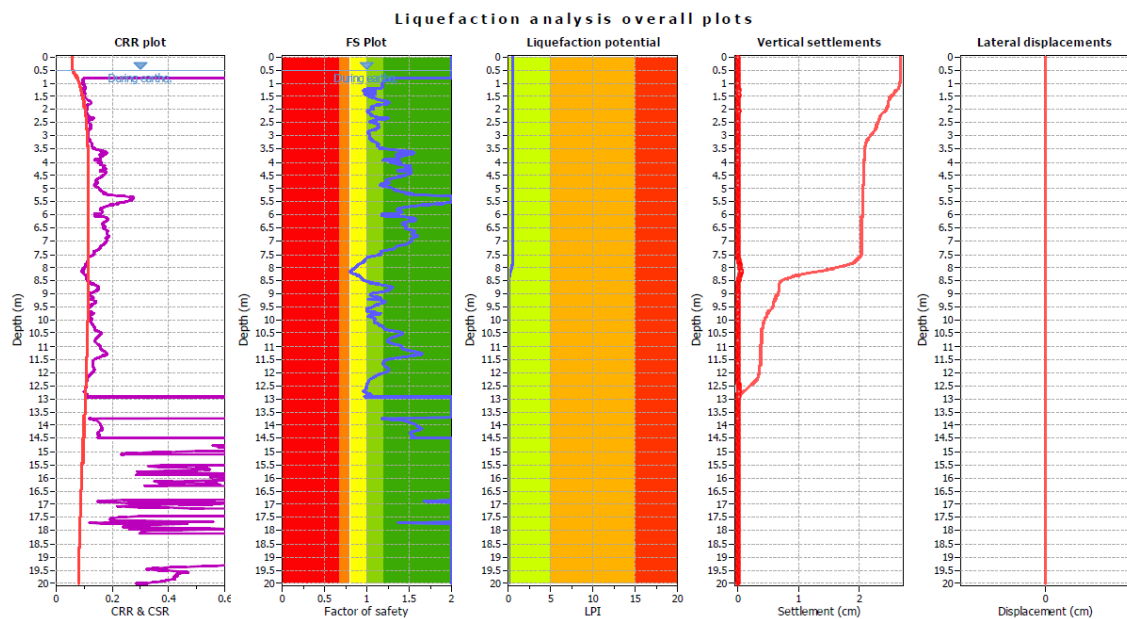
Mw=6,14

PGA= 0.15g

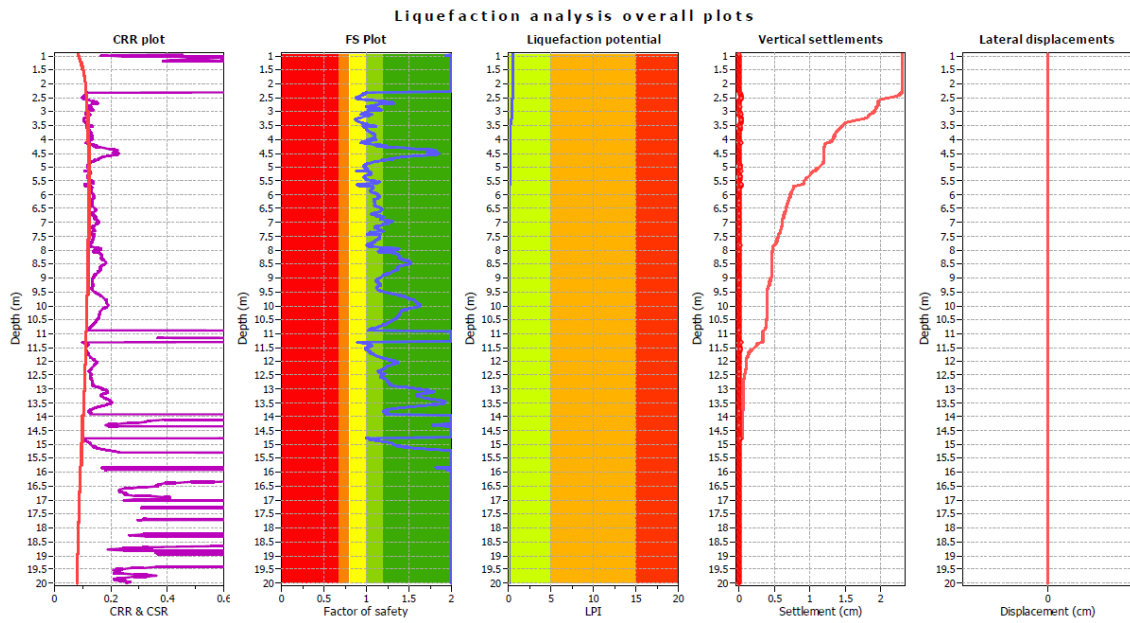
CPTU1



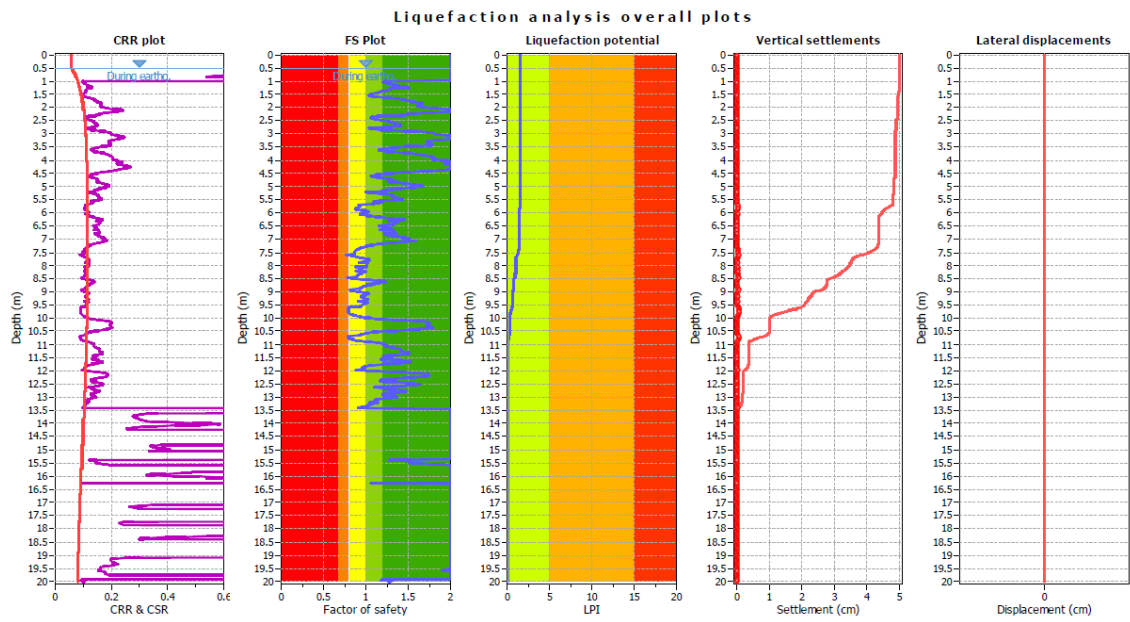
CPTU2



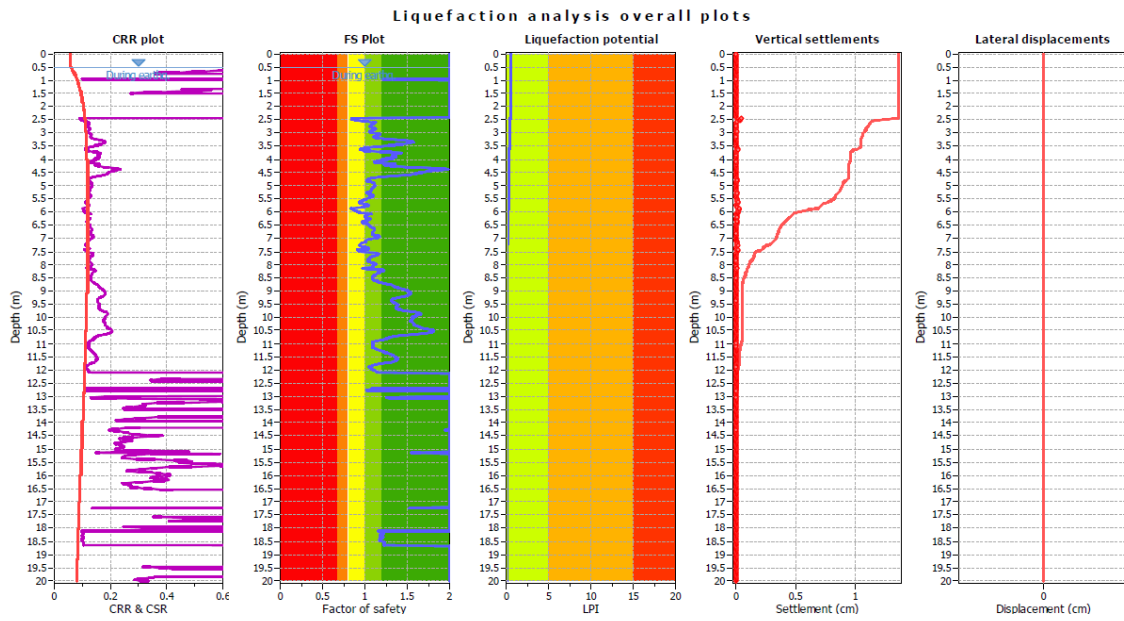
CPTU3



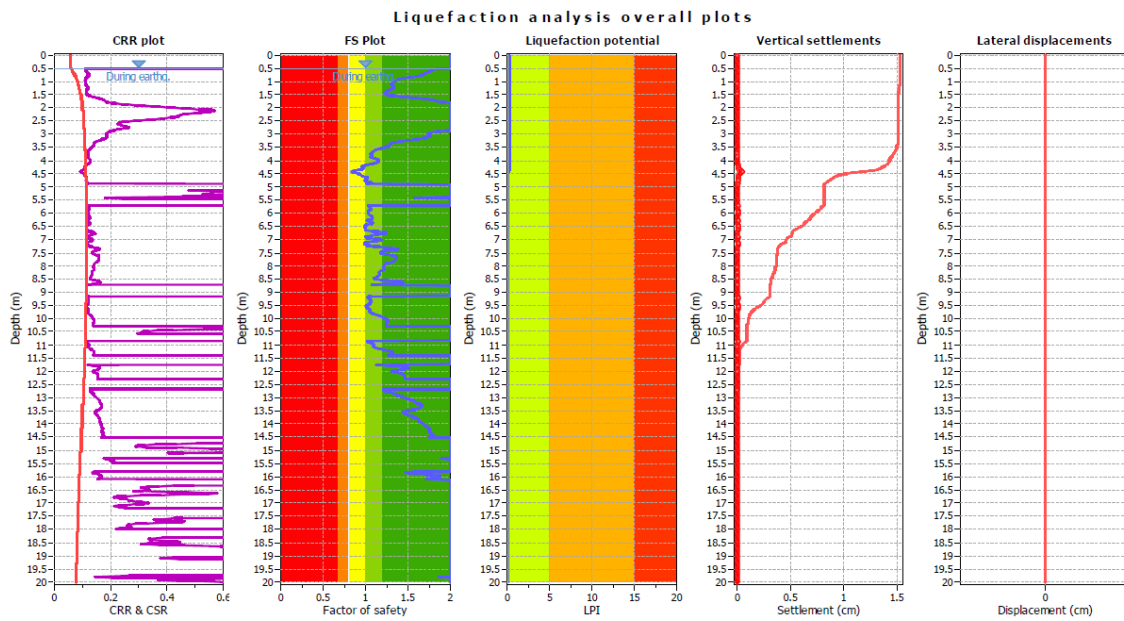
CPTU4



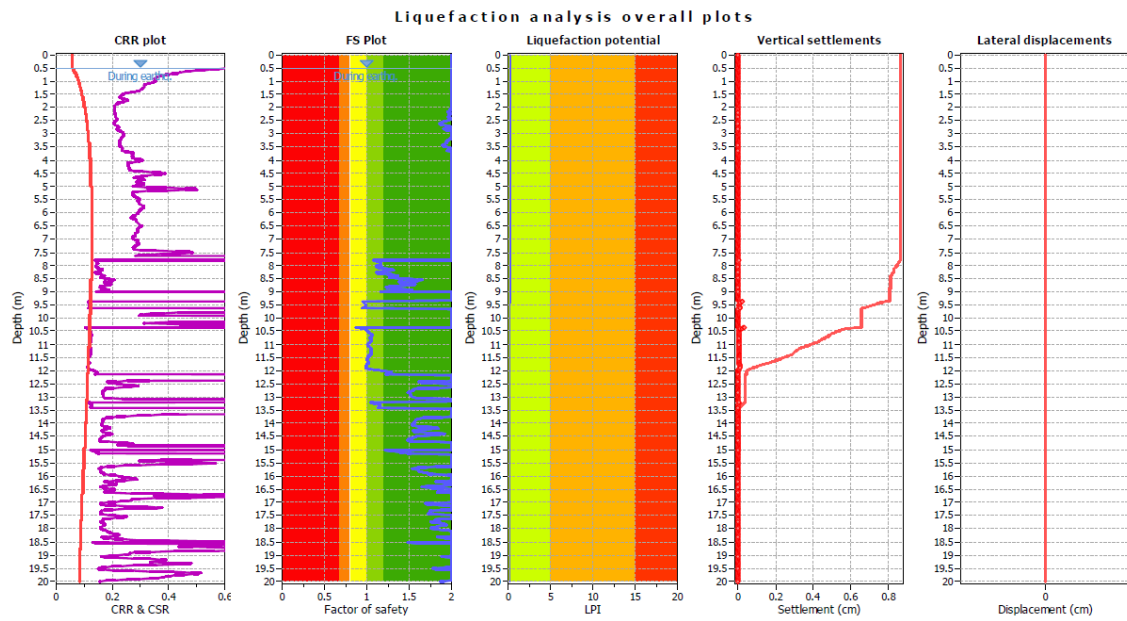
CPTU5



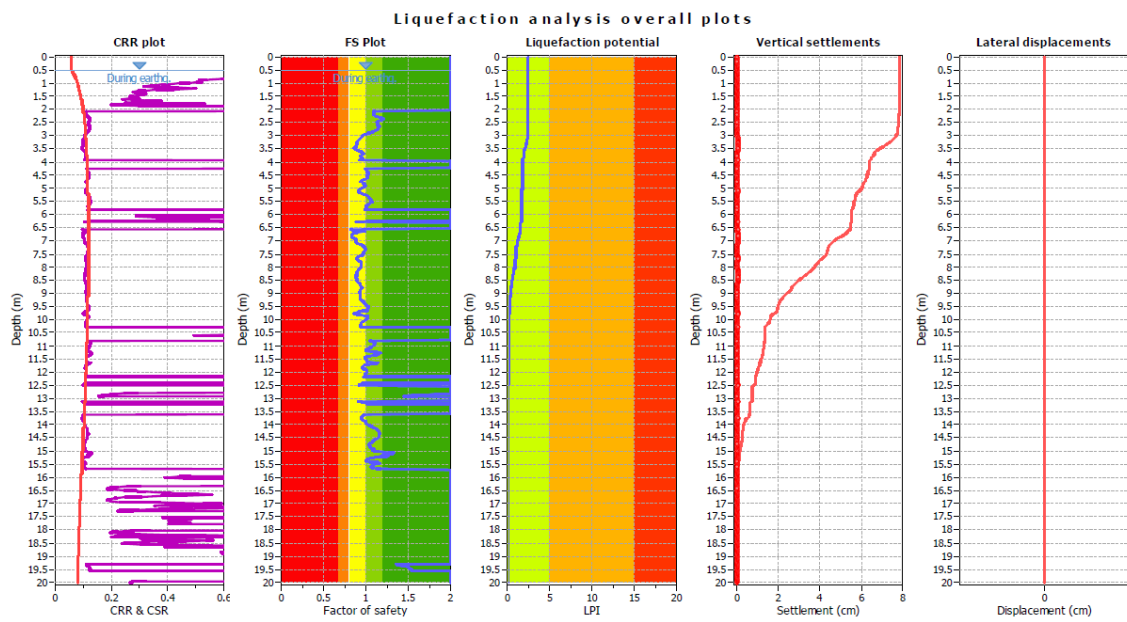
CPTU6



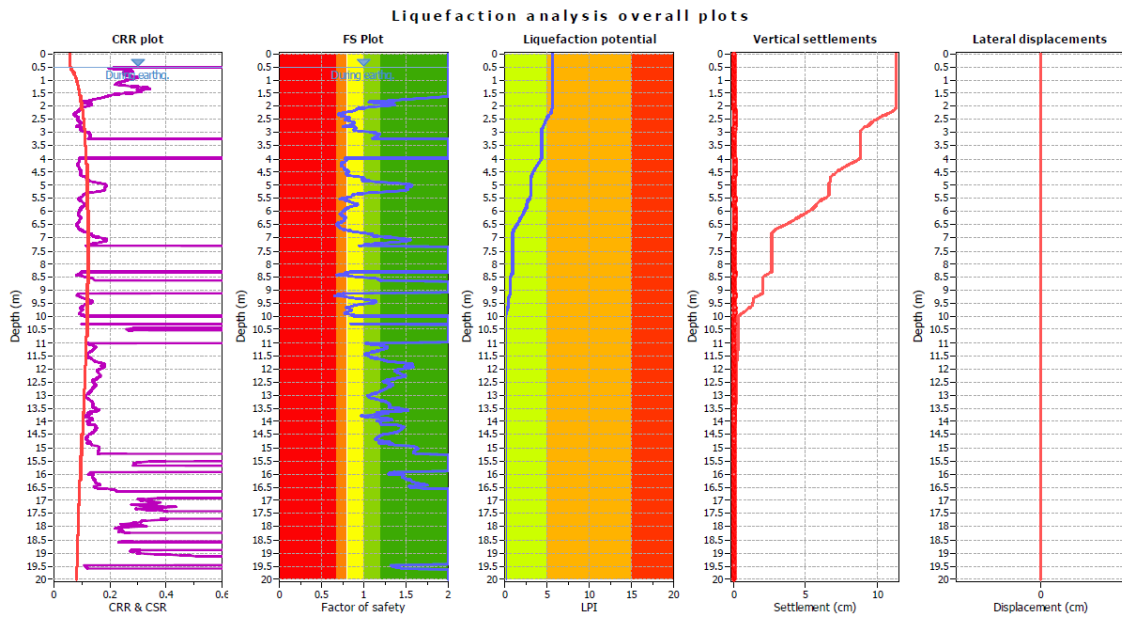
CPTU7



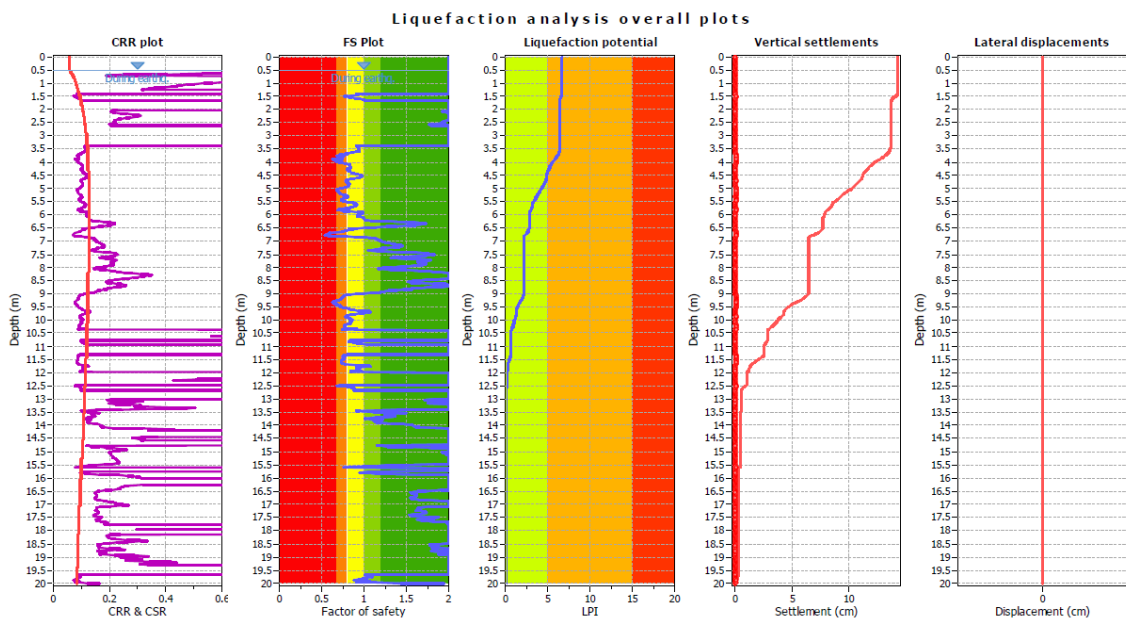
CPTU8



CPTU9



CPTU10

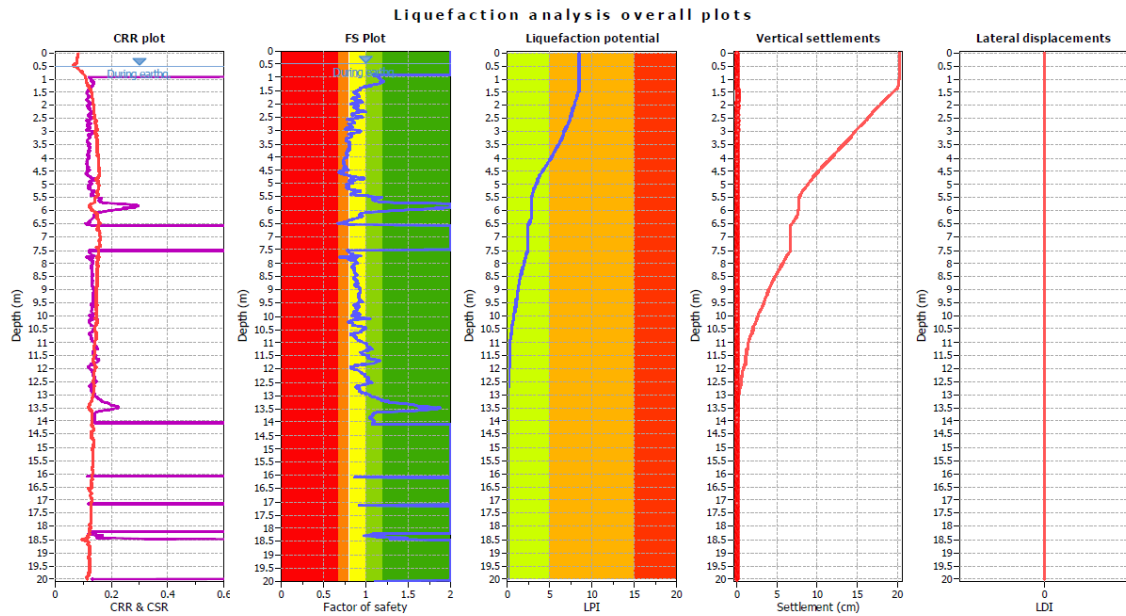


METODO DI BOULANGER & IDRIS (2014)

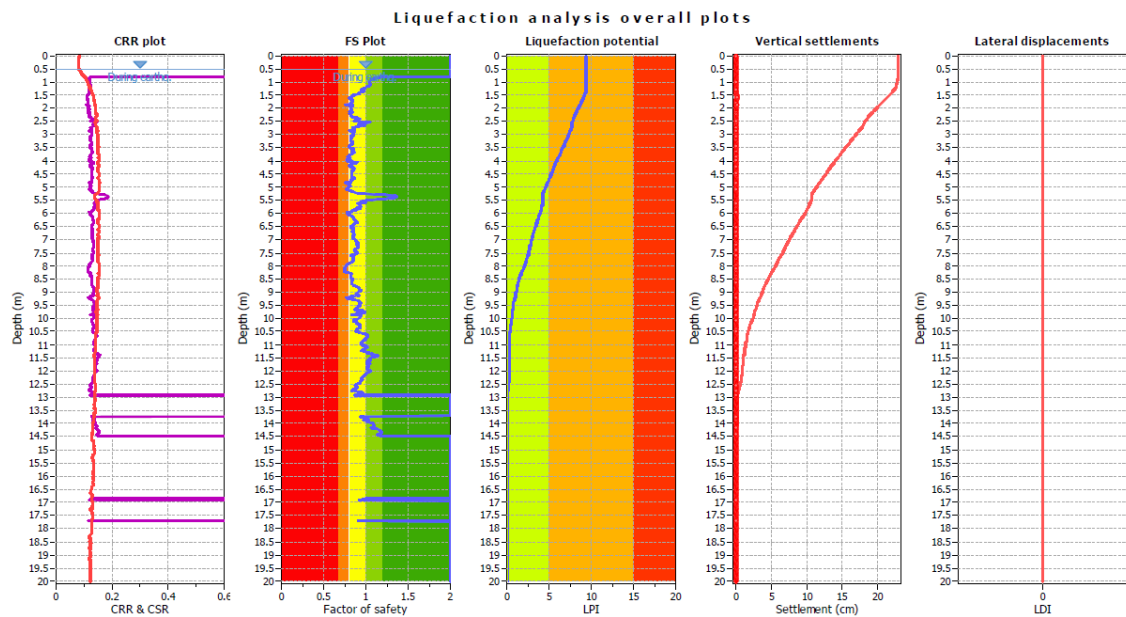
Mw=6,14

PGA= 0.15g

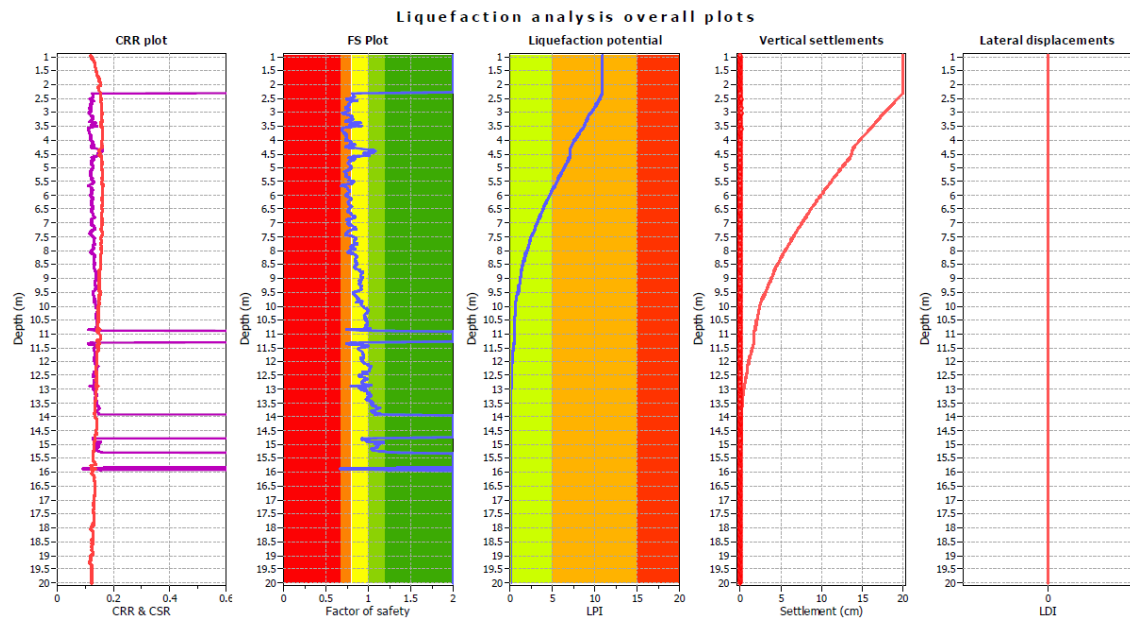
CPTU1



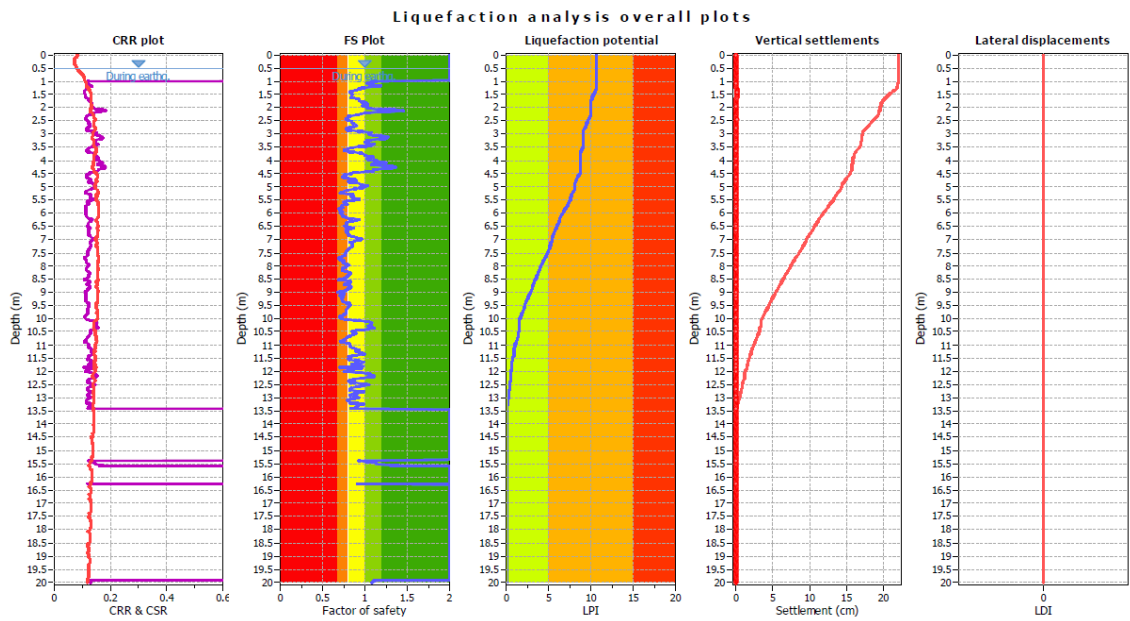
CPTU2



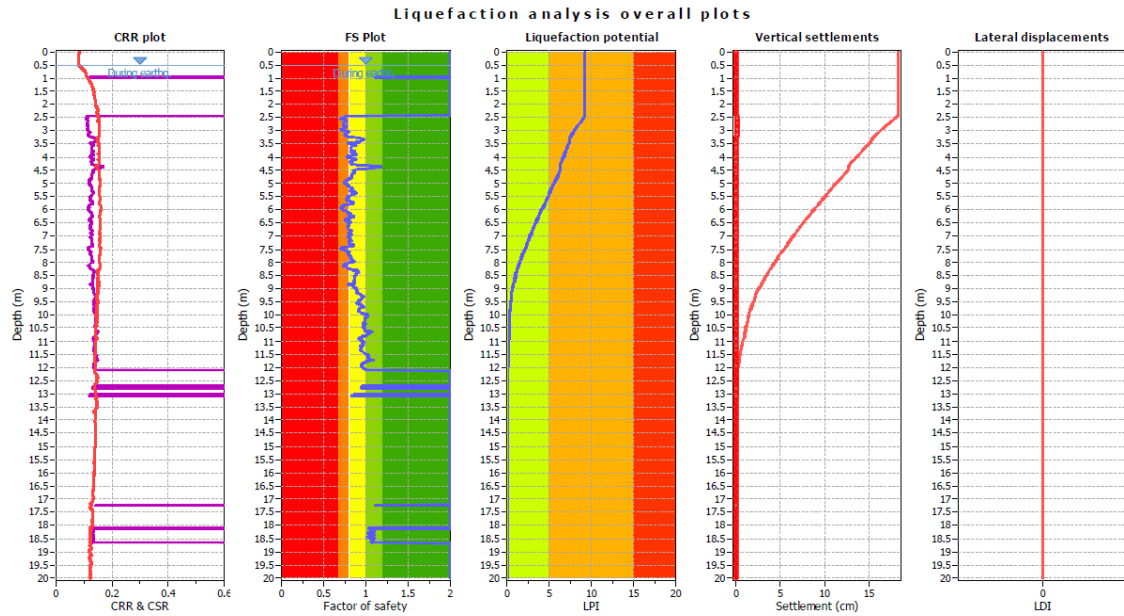
CPTU3



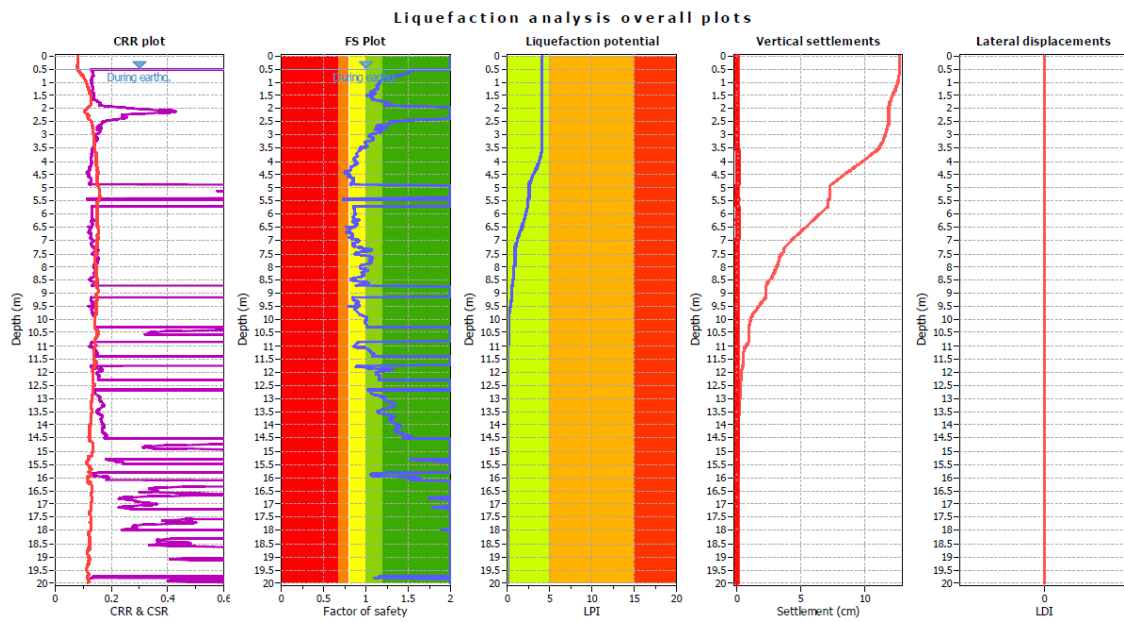
CPTU4



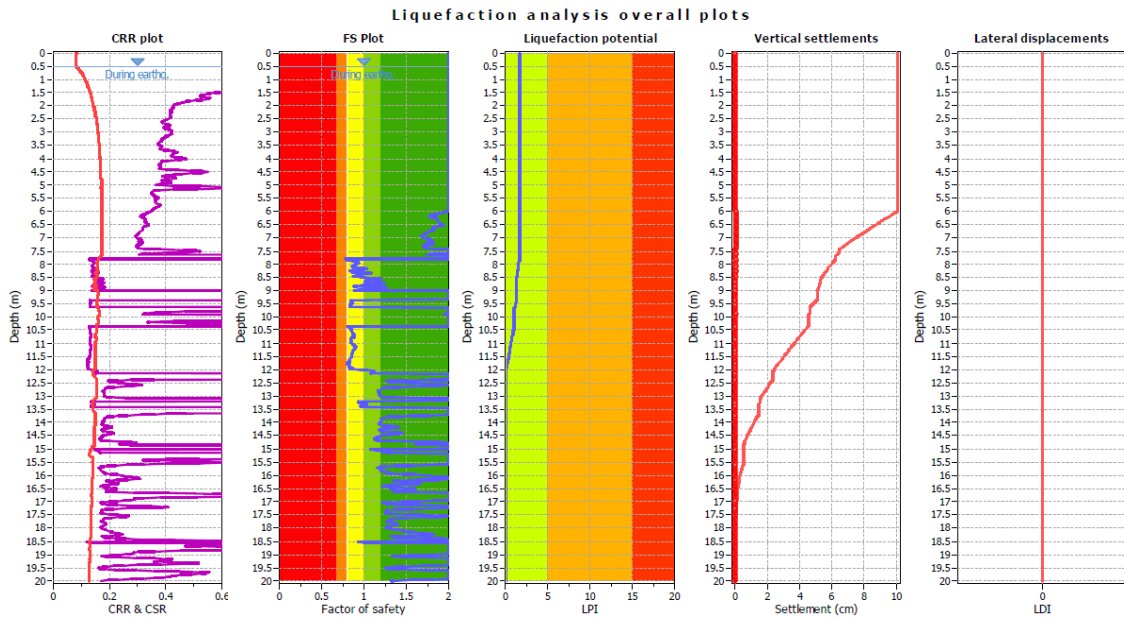
CPTU5



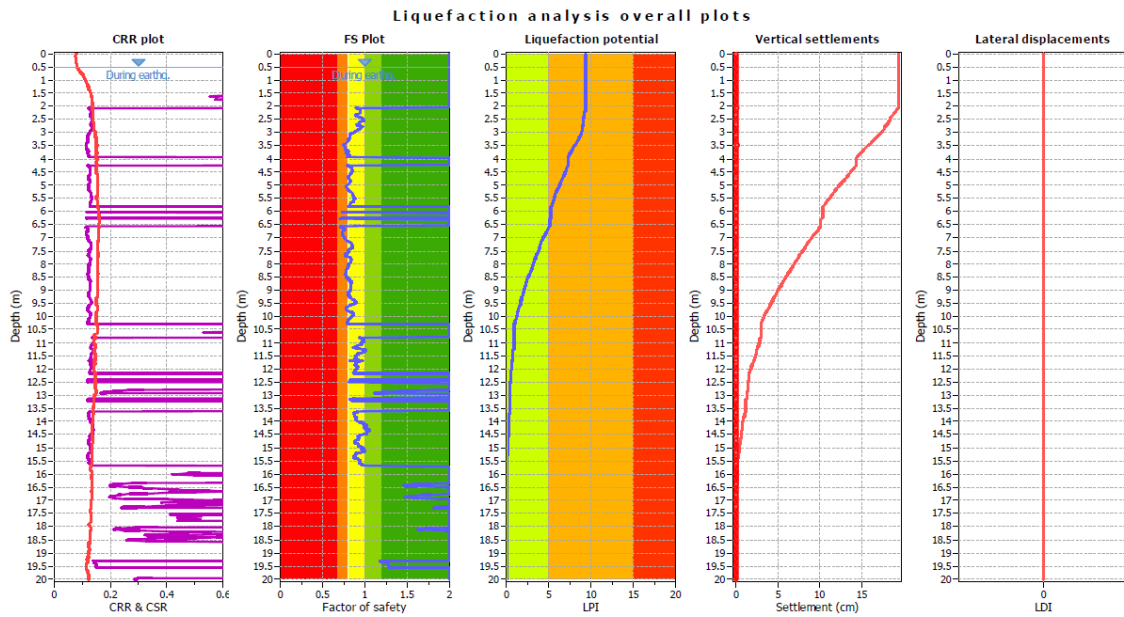
CPTU6



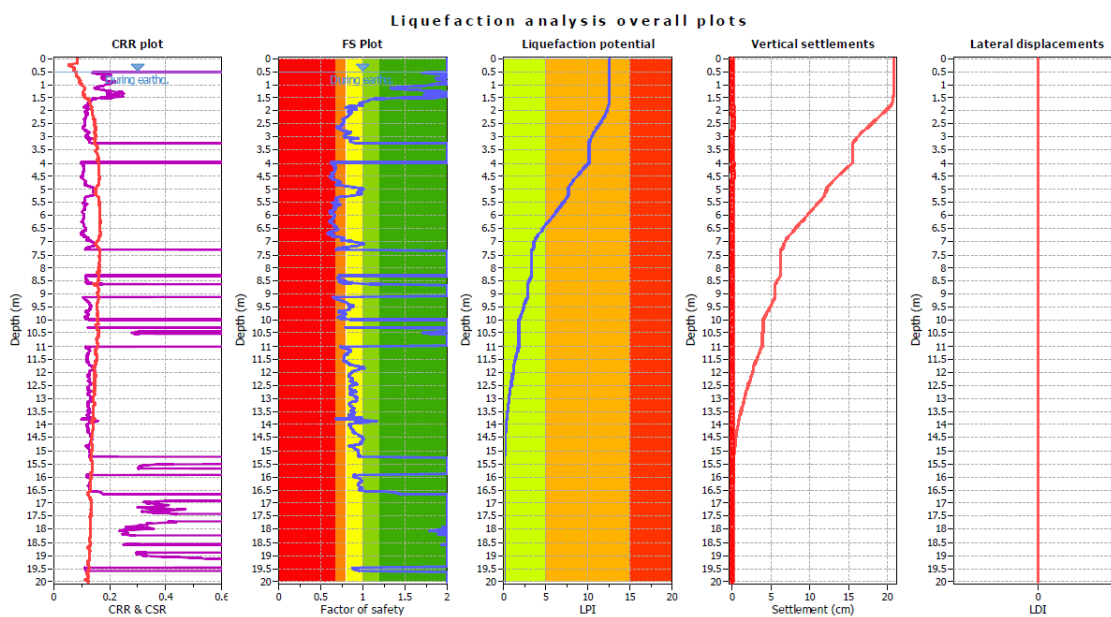
CPTU7



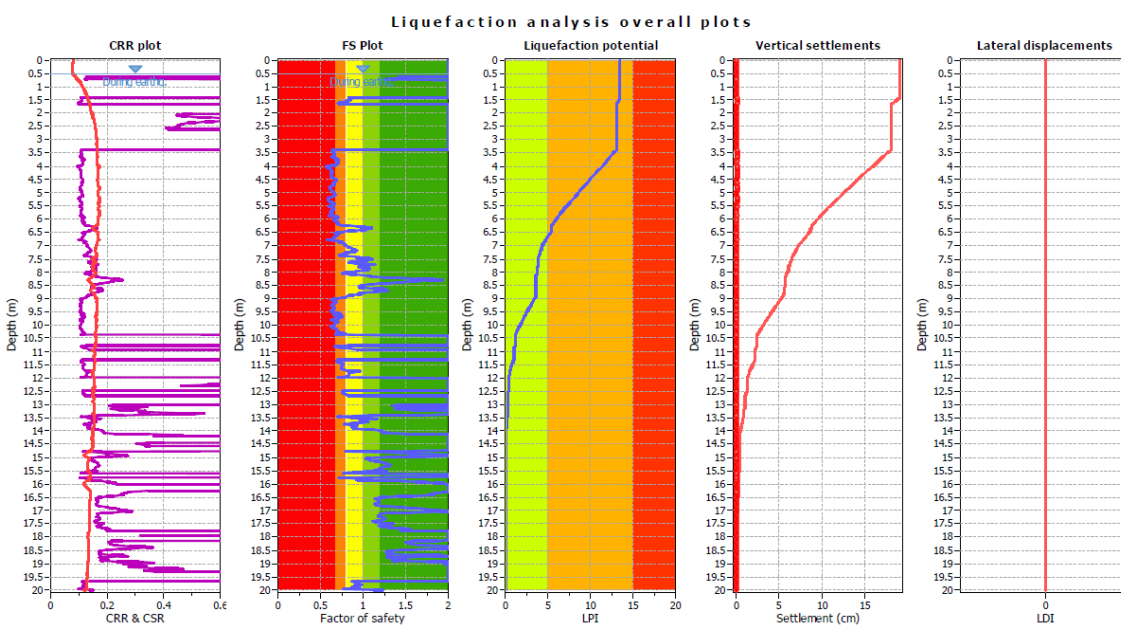
CPTU8



CPTU9



CPTU10

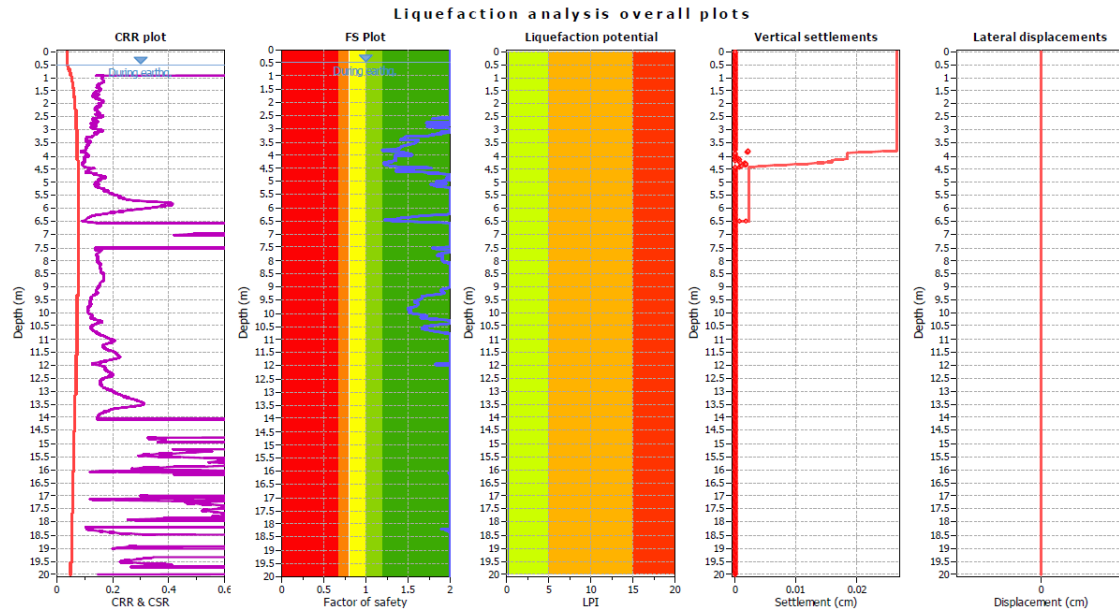


METODO DI ROBERTSON (NCEER R&W 1998,2009)

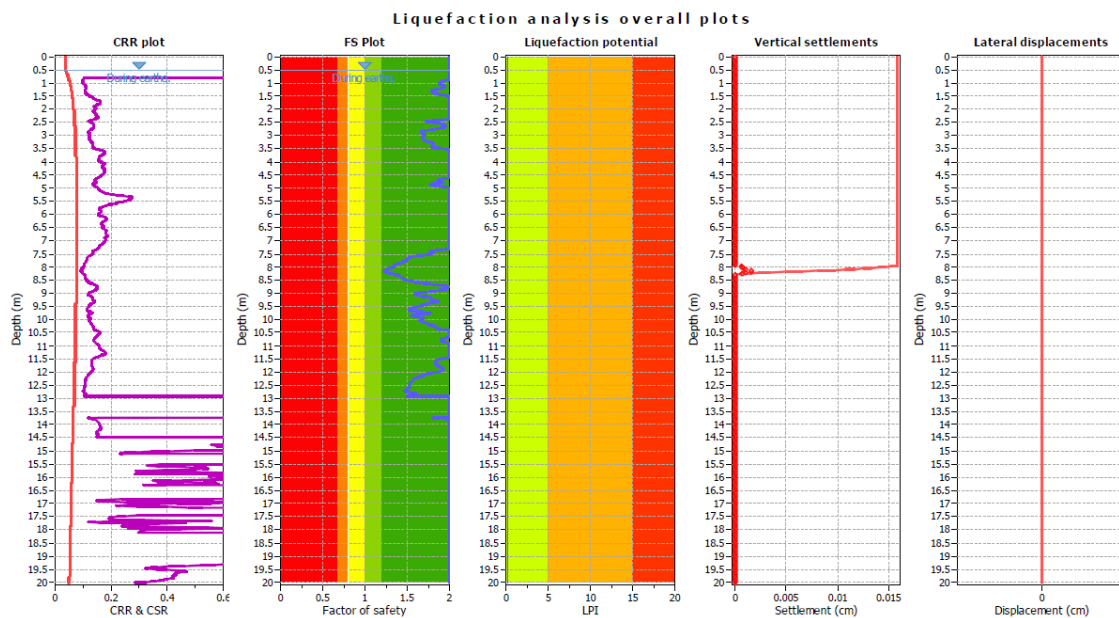
Mw=5,20

PGA= 0.15g

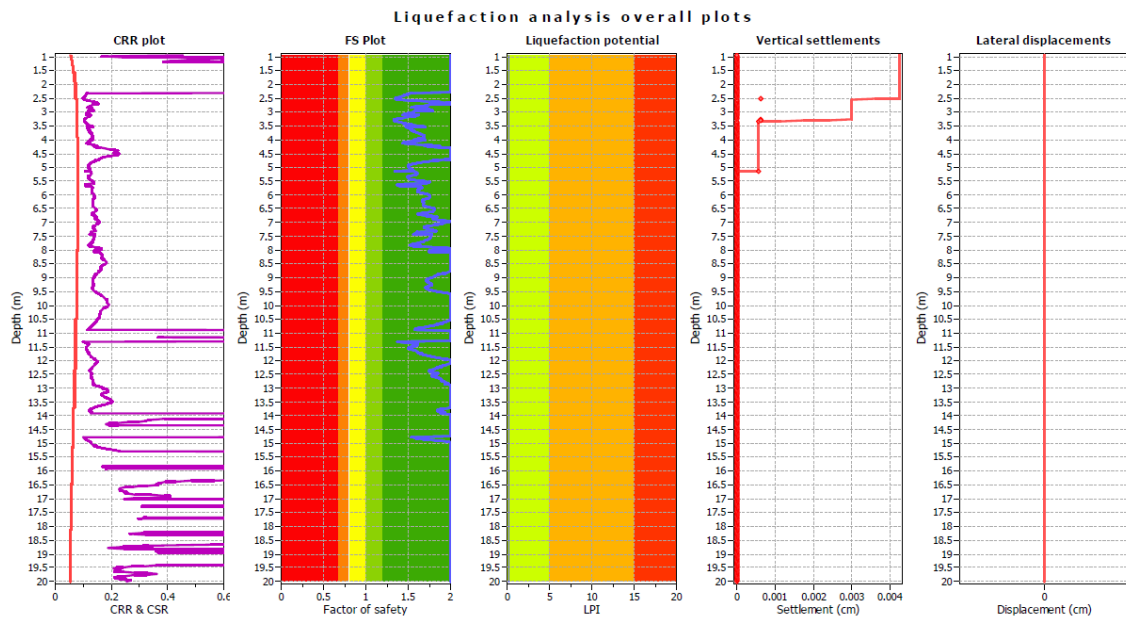
CPTU1



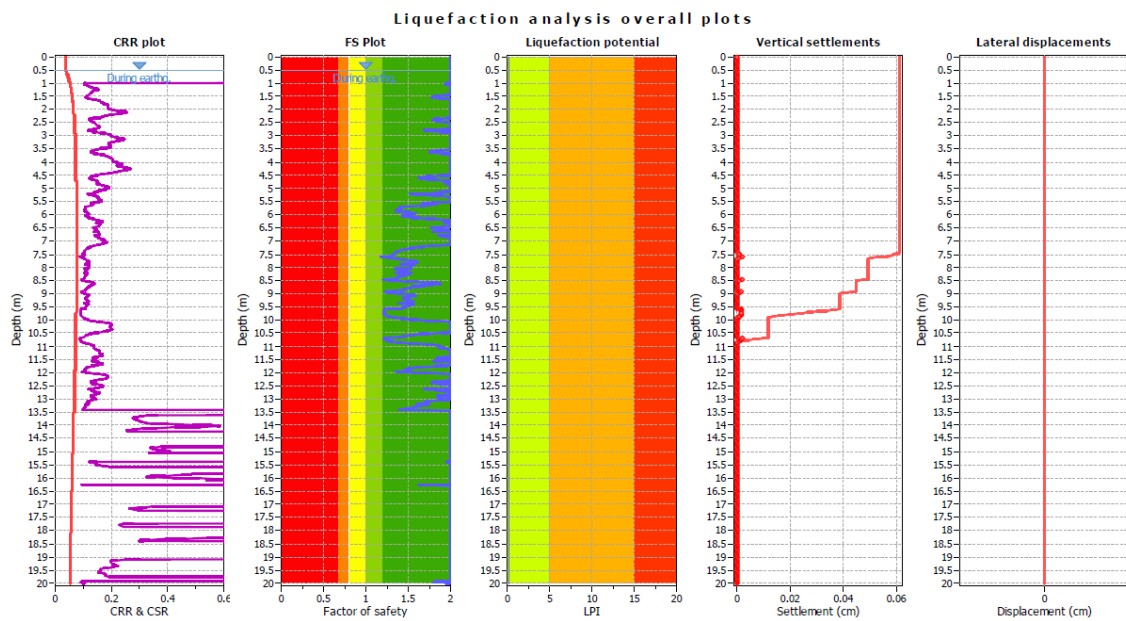
CPTU2



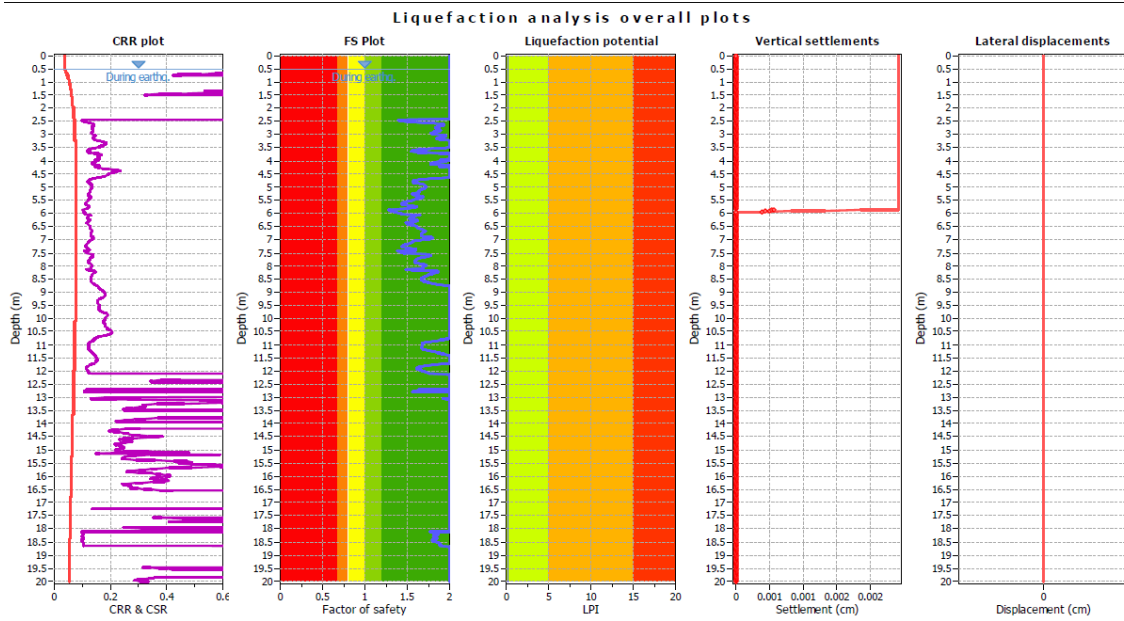
CPTU3



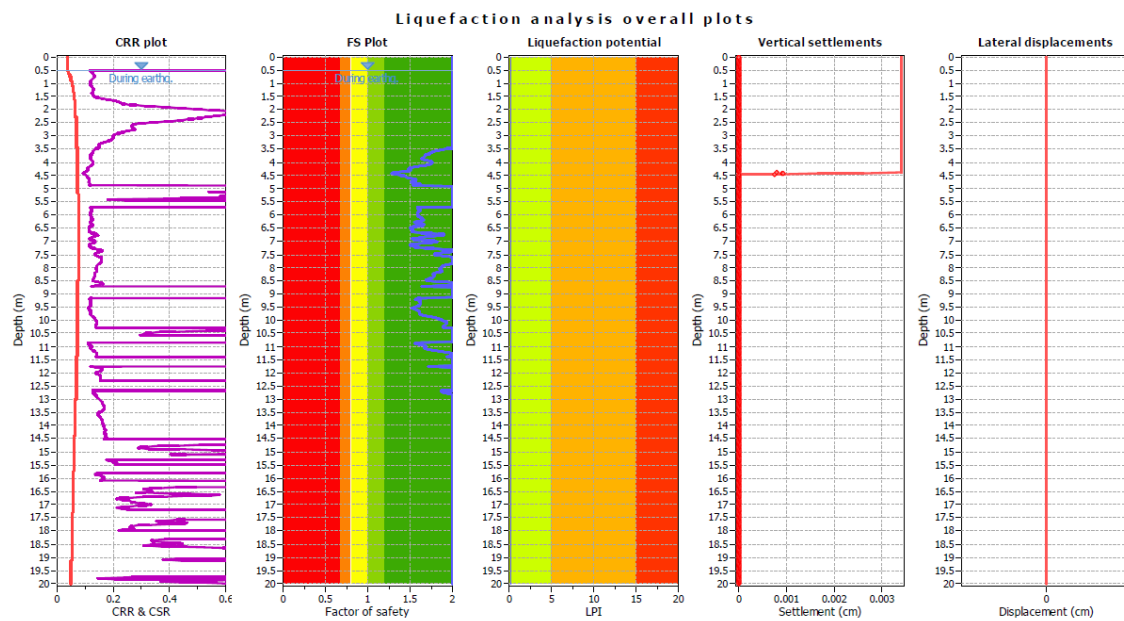
CPTU4



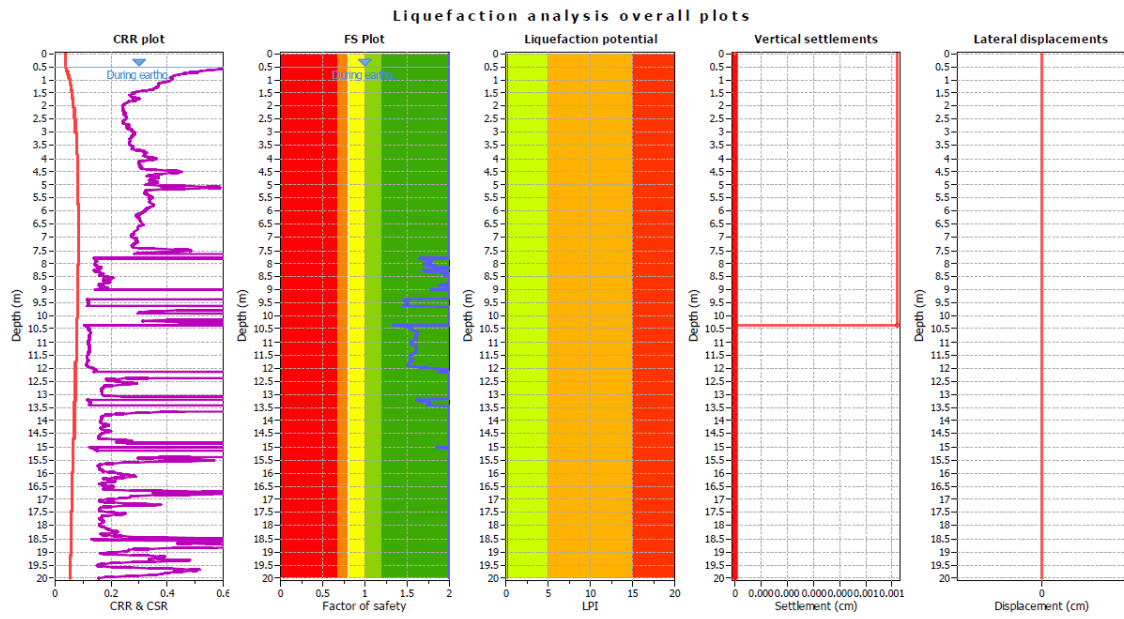
CPTU5



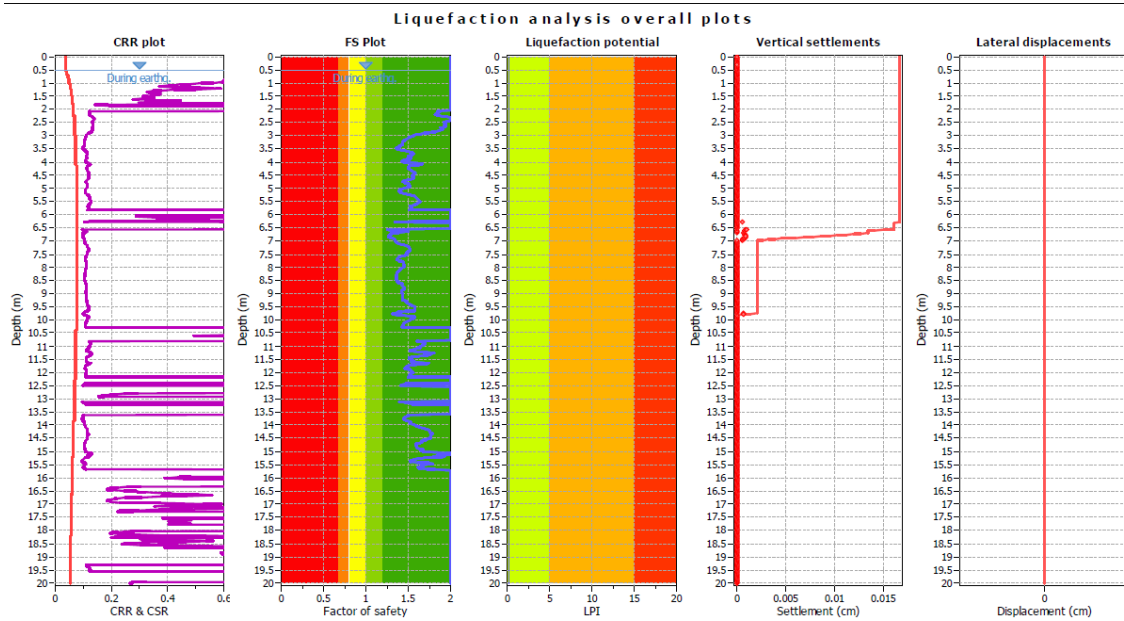
CPTU6



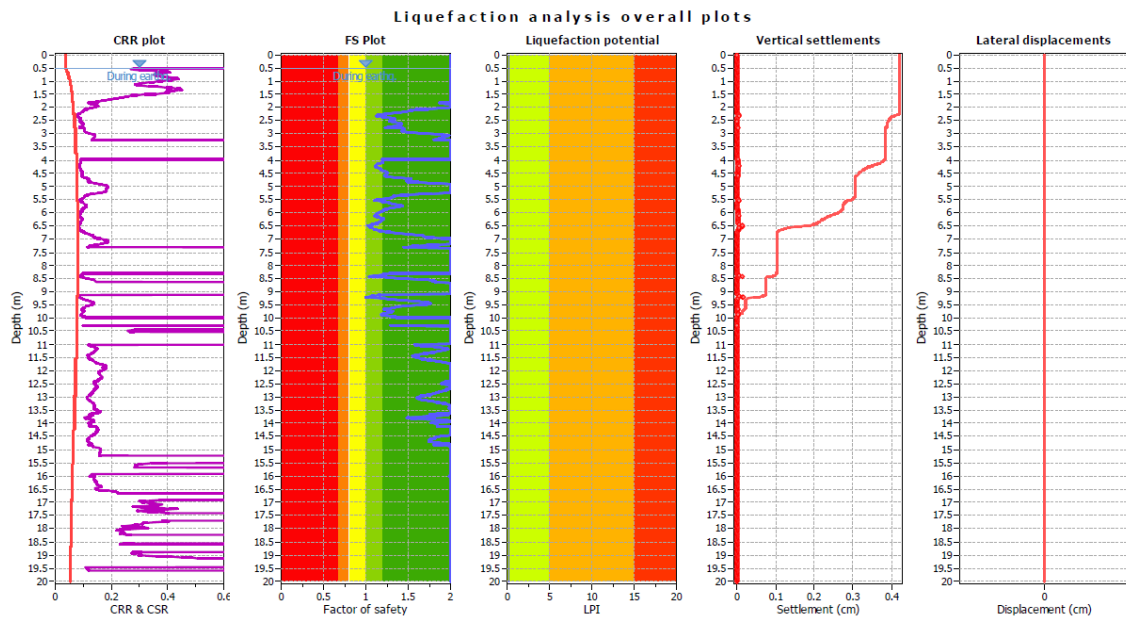
CPTU7



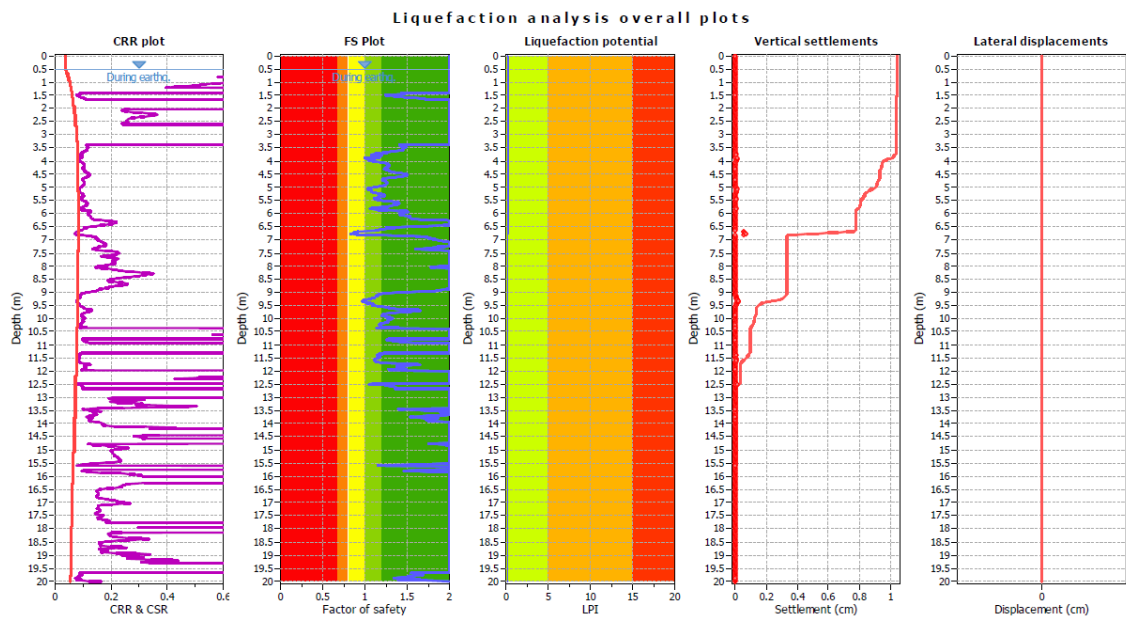
CPTU8



CPTU9



CPTU10

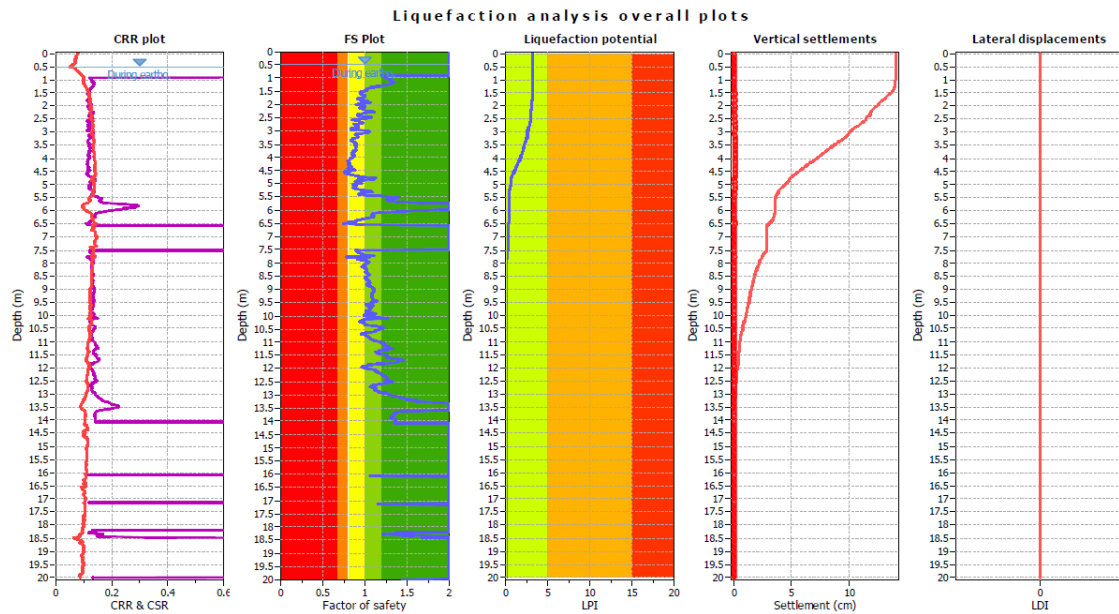


METODO DI BOULANGER & IDRIS (2014)

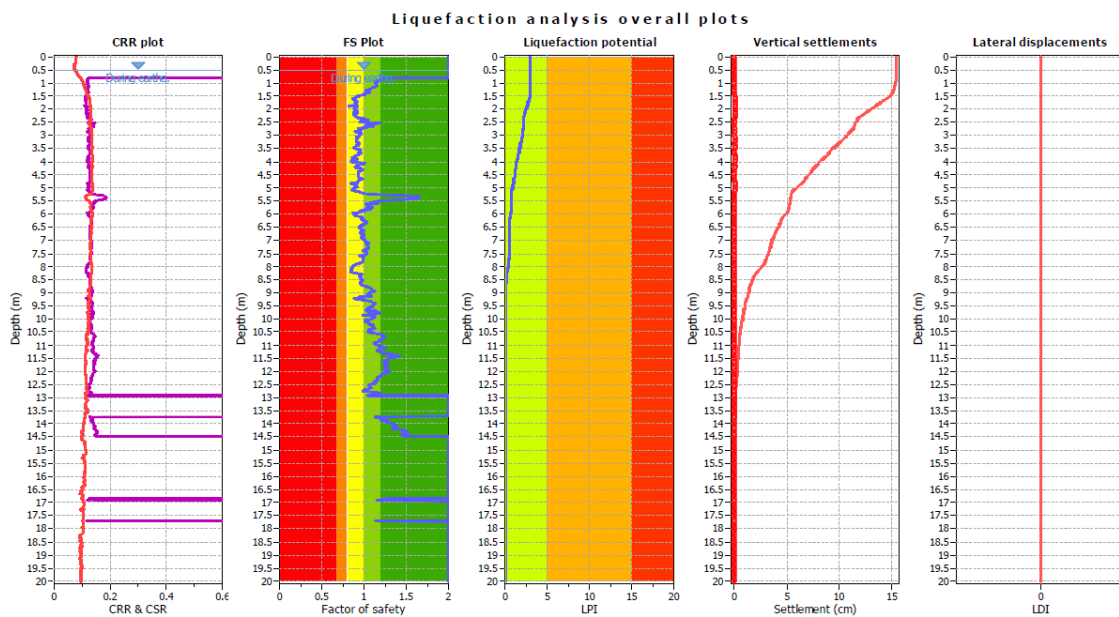
Mw=5,20

PGA= 0.15g

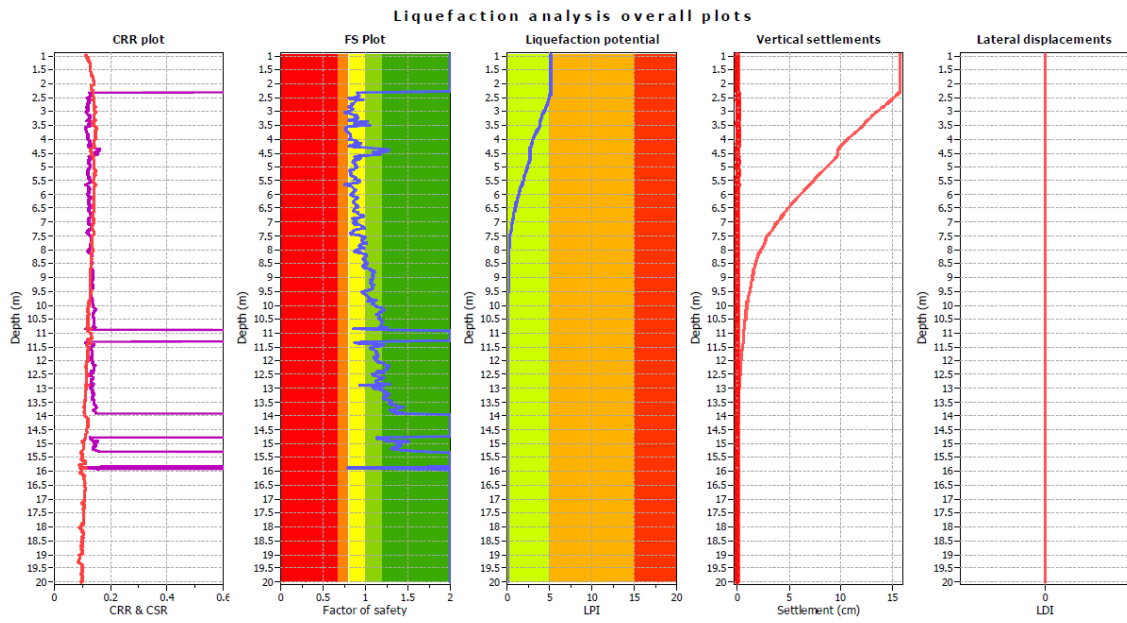
CPTU1



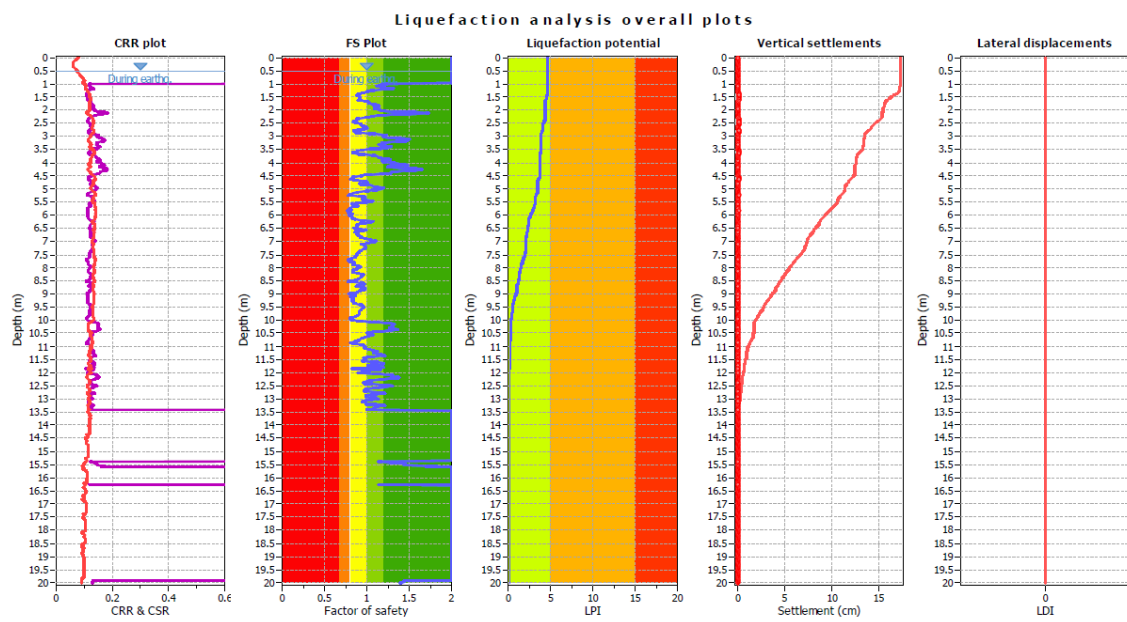
CPTU2



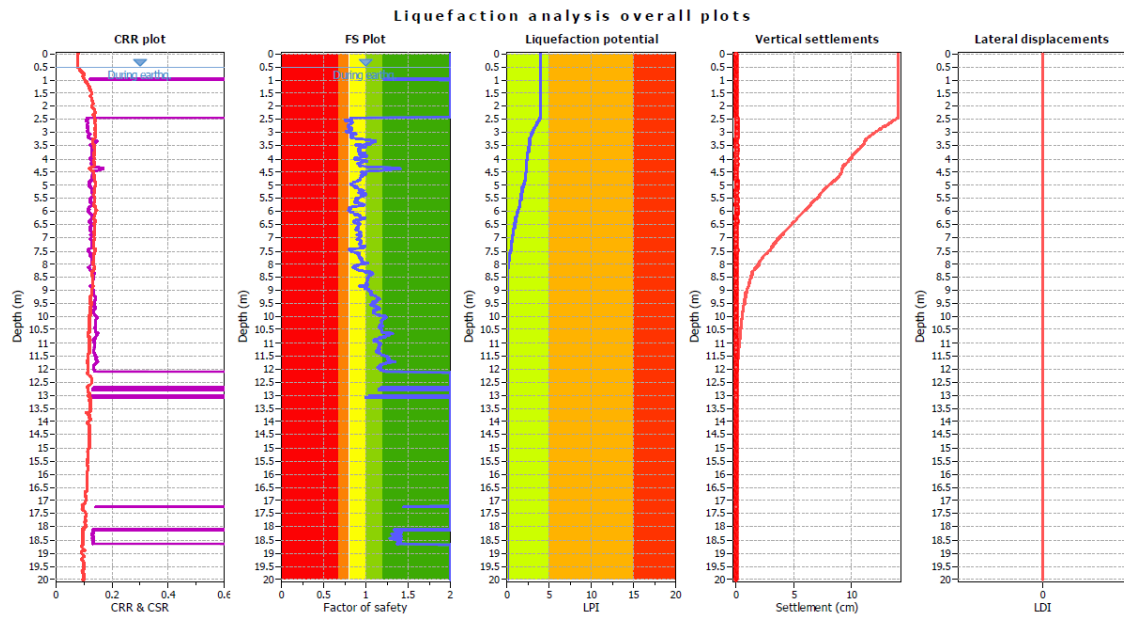
CPTU3



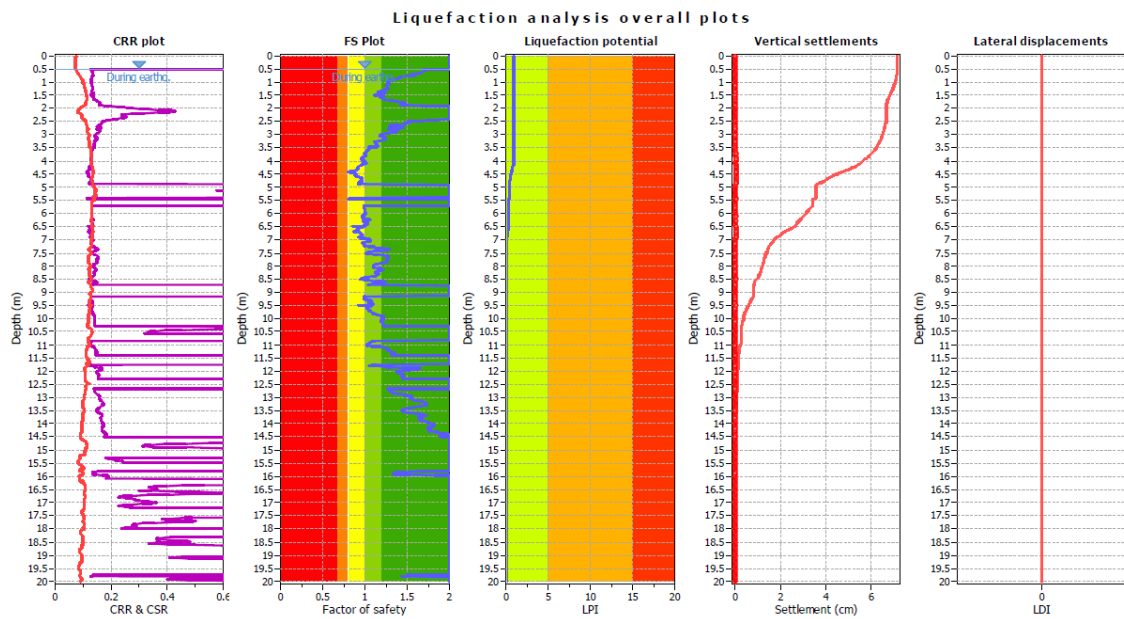
CPTU4



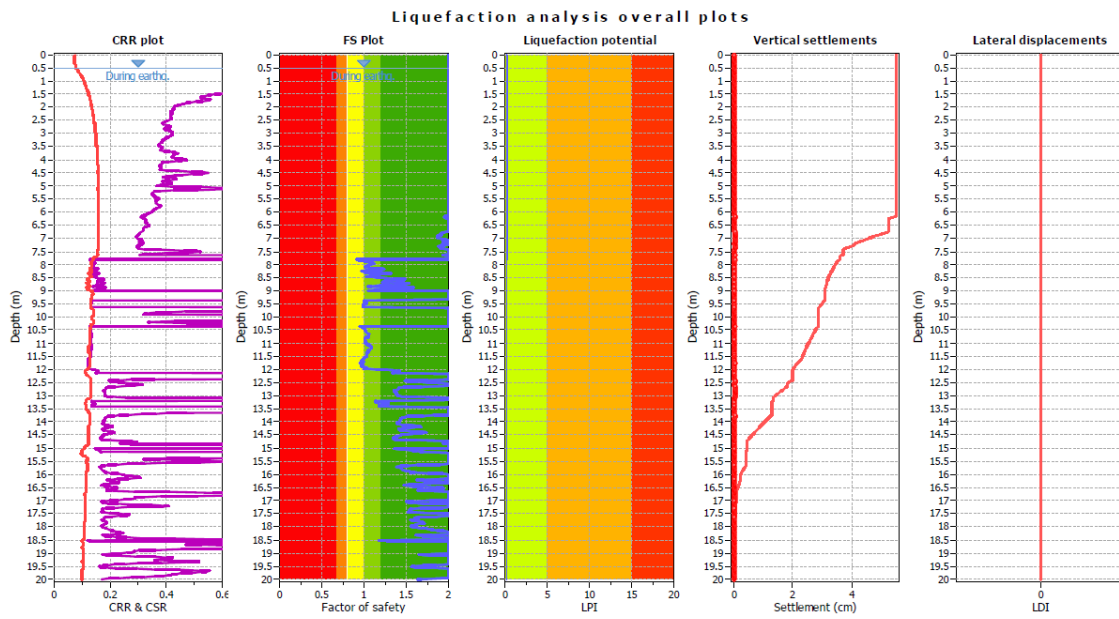
CPTU5



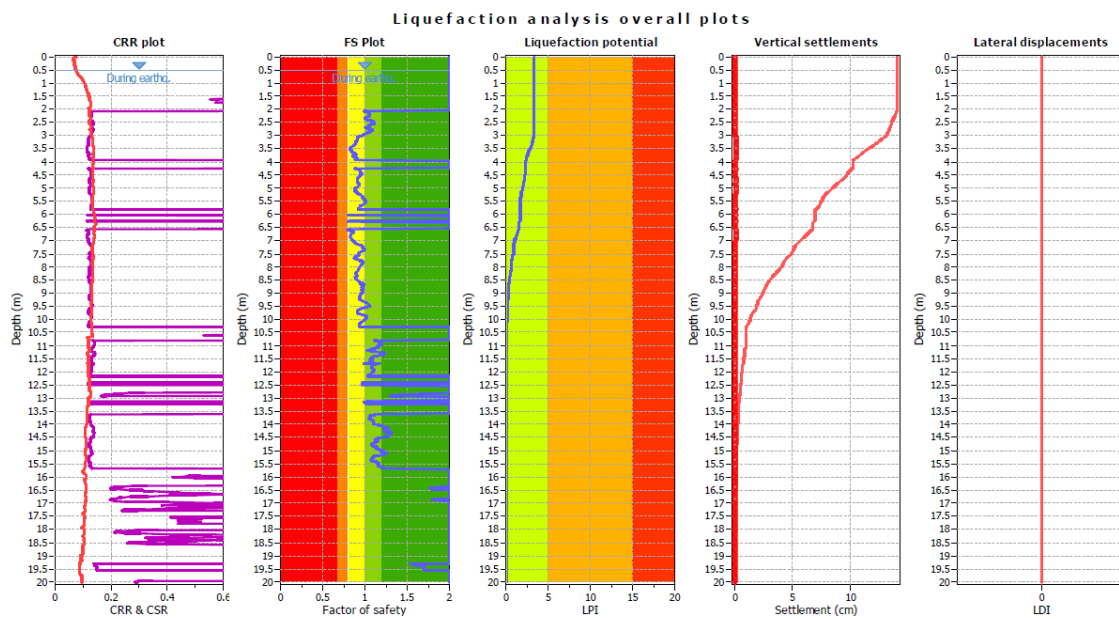
CPTU6



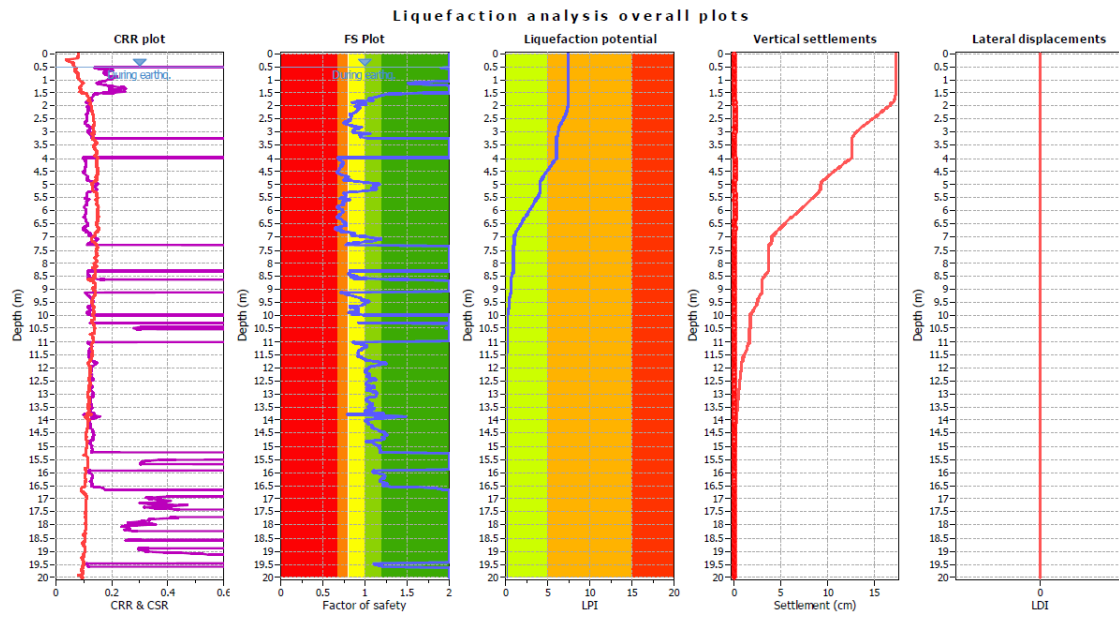
CPTU7



CPTU8



CPTU9



CPTU10

